

Greater Christchurch Spatial Plan

**Draft plan for consultation – Reporting
Officer Recommendations - Mark Up
Version –Post Hearing Day 7 -
Thursday 16 November**

Have your say

To insert details around Special Consultative Process

DRAFT

Huihui Mai Engagement – what we heard

The Huihui Mai – let’s come together to plan our future engagement was held from 23 February – 26 March 2023 to seek community input and test the work to date to inform the development of the draft Spatial Plan and the Mass Rapid Transit (MRT) Indicative Business Case work.

The engagement included an online survey, public workshops, drop-ins, activations, and a dedicated youth engagement programme which included workshops in schools and a youth summit.

During the engagement over 7,000 people completed the online survey and over 500 people were engaged face-to-face through public and youth workshops, an online webinar, drop-ins across Greater Christchurch, and presentations to groups. Of these, over 1,300 people who completed the online survey and participated in workshops were under the age of 25.

Findings from the engagement include:

- 86% of people agree with the proposed direction of the draft Spatial Plan to focus growth around key urban and town centres and along public transport routes.
- 53% of people agree with the proposed MRT route (24% disagree). Agreement is much higher in suburbs along the MRT route (72%). For those who did not agree, a desire for improved public transport to where they live – Rolleston, Rangiora, Eastern Christchurch (i.e. not on the proposed route) is the main reason for disagreeing with the proposed route.
- 56% of people are open to higher density living, but it needs to be planned and designed to meet their different needs and provide quality of life for people.
- To use their cars less, people want more frequent, more reliable and more direct public transport.

The feedback on what would encourage people to consider higher density living and using their cars less, and what people value and believe is missing in their neighbourhoods provides an important input into the implementation of the Spatial Plan.

Key Themes from the Engagement	How this is considered in the draft Spatial Plan
The vast majority of people agree with the direction to focus growth around urban and town centres and along public transport routes	Consistent with the direction of the draft Spatial Plan
Many people are open to high density living, but it needs to be planned and designed to meet their different needs and provide quality of life for people	As key tools to deliver the Spatial Plan are developed – e.g. Priority Development Areas, Housing Plan, – explicit consideration must be given to how to ensure that the development of high density housing meets the holistic wellbeing and lifestyle needs of people.
People want effort focused on all aspects of the natural environment, with particular importance placed on improving the health of our waterways.	Inform the development and implementation of a Greater Christchurch blue-green network. This is a key move in the draft Spatial Plan.
Over half of people agree with the suggested ‘turn up and go route’. Where they don’t agree, it’s mainly about wanting enhanced public transport / extension of the route to where they live	The draft Spatial Plan identifies the ‘turn up and go route’ or Mass Rapid Transit route as a key move in shaping greater Christchurch. The draft Spatial Plan seeks to focus development along these routes and centres. This is also reflected in the identification of the Priority Development Areas (arising from

	technical evaluation) which are focused into key locations along the 'turn up and go route'.
To use their cars less, people want more frequent, more reliable and more direct public transport.	The draft Spatial Plan identifies a number of opportunities and directions for shaping Greater Christchurch urban form to enable people to use their cars less, if they choose too.
Partnership and communication between urban development partners needs to improve to achieve better outcomes.	The draft Spatial Plan joint work programme has actions/initiatives that will require the need to establish better models for partnering/communicating with urban development partners. The draft Spatial Plan acknowledges that Coordinated action with infrastructure providers and the development sector will be of particular importance to enabling the type and scale of development needed to achieve the desired pattern of growth
We need to protect Greater Christchurch's role as a national and regional logistics hub.	The draft Spatial Plan as part of the Opportunity statements directions. This will also be an important component of the Greater Christchurch Transport Plan.
There are some barriers and challenges to shift the balance of commercial residential development from greenfield to higher density housing.	The review of statutory / non-statutory tools to shift the feasibility of development is proposed as an action within the draft Spatial Plan joint work programme.

With the Huihui Mai consultation exploring what Greater Christchurch could look like in 2050, there was a large emphasis on capturing the youth voice. 1,300 youth under 25 took part in our survey, and 386 rangatahi from schools, tertiary institutions, youth councils/rōpū and participation groups participated in tailored workshops.

Key themes identified by youth included:

- There needs to be an affordable and accessible range of housing options for different groups of people, including options for intergenerational living and large whānau/aiga, when planning for future growth.
- First home buyers and flatmates would be very open to high density housing – this would need to be affordable and have good design that maintains privacy, space and energy efficiency and promotes access to green spaces.
- The 'Turn up and go service' could be extended to Kaiapoi and Rolleston, and out East – to make the central city and Greater Christchurch areas more accessible. Considerations for transport options are: affordability, accessibility, frequency, consistency, safety for drivers and passengers and Wi-Fi friendly.
- Climate change, a clean and green environment, and the Avon and drinking water quality is a top priority.
- Safety across all aspects of living, working, transport and recreation in Greater Christchurch and on online platforms is important.
- Māoritanga is embraced, visible and valued. Greater Christchurch is diverse, multi-cultural and welcoming and this is reflected in the city and at the decision making tables.

Contents

Have your say.....	2
Huihui Mai Engagement – what we heard	3
Contents.....	5
Key terms	6
Introduction	8
Context.....	13
How Greater Christchurch has grown.....	13
Planning and policy context.....	14
The spatial strategy.....	20
Overarching directions.....	25
Key moves	27
Part 1 – Areas to protect, avoid and enhance	40
Opportunity 1: Protect, restore and enhance historic heritage and sites and areas of significance to Māori, and provide for people’s physical and spiritual connection to these places.....	42
Opportunity 2: Reduce and manage risks so that people and communities are resilient to the impact of natural hazards and climate change.....	46
Opportunity 3: Protect, restore and enhance the natural environment, with particular focus on te ao Māori, the enhancement of biodiversity, the connectivity between natural areas and accessibility for people.....	53
Part 2 – An urban form for people and business.....	60
Opportunity 4: Enable diverse, quality , and affordable housing in locations that support thriving neighbourhoods that provide for people’s day-to-day needs.....	60
Opportunity 5: Provide space for businesses and the economy to prosper in a low carbon future	69
Part 3 – Connecting people and places.....	78
Opportunity 6: Prioritise sustainable and accessible transport choices to move people and goods in a way that significantly reduces greenhouse gas emissions and enables access to social, cultural and economic opportunities.....	78
Implementation	83
Joint work programme.....	83
Tools.....	87
Partnerships	87
Monitoring	87

Key terms

BLUE-GREEN NETWORK

A blue-green network is a series of spaces and corridors that follow and connect water bodies, parks, green areas and the coast. Blue elements include rivers, streams, storm water drains and basins, wetlands, freshwater, and coastal water; while green elements include trees, parks, forests, reserves and greenways.

CENTRE

A centre is a location that is a focal point for economic, social, community and civic activity. This plan refers to four different types of centres – being significant urban centres, major towns, locally important urban centres and towns, and key business areas – reflecting the expected scale and mix of activities and buildings.

DENSITY

Density refers to the number of houses or dwellings within a certain area. The higher the number of dwellings per hectare, the higher the density. This plan refers to low, medium and high density. Low density generally describes an area with predominately detached dwellings on sections greater than 300m². Medium density describes areas where attached dwellings are more prevalent, such as semi-detached or duplex dwellings, terraced housing, or low-rise apartments. In high density areas, multi-story buildings are prevalent.

DEVELOPMENT CAPACITY

Development capacity means the capacity of land to be developed for housing or for business use; based on the zoning, objectives, policies, rules and overlays that apply in the relevant proposed and operative Resource Management Act planning documents, and the provision of adequate development infrastructure to support the development of land for housing or business use.

GREATER CHRISTCHURCH

Greater Christchurch is described in detail in the Greater Christchurch Spatial Plan, however it is generally understood as the area covering the eastern parts of Waimakariri and Selwyn Districts Councils and the metropolitan area of Christchurch City Council, including the Lyttelton Harbour Basin. It includes the towns of Rangiora, Kaiapoi and Woodend/Pegasus to the north and Rolleston, Lincoln and West Melton to the south-west. The extent of Greater Christchurch is shown on Map 2 of the Greater Christchurch Spatial Plan.

GREEN BELT

A green belt is a planning tool used to maintain areas of green space around urban areas, often acting as a buffer between urban and rural areas.

KĀINGA NOHOANGA

Kāinga nohoanga is a form of settlement or land development for members of hapū or whānau providing residential accommodation. It may also include accommodation for visitors and short term residents with associated communal buildings and facilities; as well as social activities and facilities, commercial activities, and cultural facilities and activities.

MASS RAPID TRANSIT

Rapid transit is a step up from conventional public transport, being a quicker, more frequent and reliable, higher-capacity public transport service that operates on a permanent route (road or rail) that is largely separated from other traffic. It was also being mentioned as 'turn-up-and-go' service.

MIXED-USE

Mixed-use refers to the variety of activities permitted by planning regulations to occur either within a location (such as within a town centre) or on a site. Mixed-use planning regulations permit a variety of residential, commercial or community activities to occur, rather than restricting activities to a single use, such as residential only.

MODES OF TRANSPORT AND MODE SHIFT

Transport modes refers to the different ways or types of vehicles people use to get from A to B. In this plan, the different modes of transport referred to include public transport (such as bus services), active transport (such as cycling and walking) and private vehicles (such as cars). Mode shift means growing the share of travel by public transport, cycling and walking.

NGĀ WAI

Ngā Wai encompasses water bodies and their margins, and include ngā awa (rivers), ngā roto (lakes), ngā hāpua (coastal lagoons), ngā repo (wetlands) and ngā puna (springs).

PRIORITY AREAS

Priority Areas are areas that the partnership wishes to focus coordinated effort at a given time. They are a key tool as part of the Urban Growth Agenda framework that provides a mechanism for coordinated and aligned action across multiple agencies; to inform, prioritise and unlock investment, and drive collective accountability.

It is important to note that if an area is not a 'Priority Area' through this process, it does not mean that it may not become one at a later date. The list of Priority Areas can change and be re-prioritised as challenges and opportunities change or evolve. It also does not mean that development, partnership and investment in areas outside of a Priority Area cannot occur.

SOCIAL INFRASTRUCTURE

Social infrastructure includes parks and open spaces, community facilities, schools and health facilities. In this plan, the term infrastructure includes social infrastructure, unless specified otherwise.

TARGETED INTENSIFICATION

Targeted intensification refers to accommodating housing and business growth through greater intensification around key urban and town centres, and along public transport corridors.

URBAN FORM

The urban form is the physical shape and land use patterns of towns and cities. It refers to housing types, street types, how they sit in the environment and their layout. It includes the location, density and design of homes, workplaces, schools, parks and other community facilities, as well as the transport networks that connect them.

WĀHI TAONGA

Wāhi Taonga are treasured places that have high intrinsic value, and are valued for their capacity to shape and sustain the quality of life. Access to these areas is important to Ngāi Tahu identity.

WĀHI TAPU

Wāhi Tapu are sites and places that are culturally and spiritually significant to the history and identity of mana whenua. Wāhi Tapu sites are to be protected according to tikanga and kawa to ensure the sacred nature of those sites is respected.

WELL-FUNCTIONING URBAN ENVIRONMENTS

The National Policy Statement on Urban Development requires planning decisions to contribute to well-functioning urban environments. A definition of well-functioning urban environments is provided in the *Delivering on national direction* section of this plan.

Introduction

Over the past 15 years, **Greater** Christchurch and its surrounding towns have **has** grown rapidly **to a population of around half a million**. By 2050, **more than up to** 700,000 people are **projected to could** be living in Greater Christchurch – **340%** more than there are today, with the population potentially doubling to 1 million people **in the future**, **within the next 60 years, if not earlier**. It's important to plan for how growth this significant will be accommodated, while also looking after the environment and responding to climate change.

In 2022, the Greater Christchurch Partnership and the Crown established an Urban Growth Partnership for Greater Christchurch – the Whakawhanake Kāinga Komiti. This partnership of central government, local government and mana whenua is focused on shared objectives related to affordable housing, emissions reduction, and creating liveable and resilient urban areas.

The first priority of the partnership is to prepare the Greater Christchurch Spatial Plan.

The Draft Spatial Plan sets out the partners' shared vision for the future of Greater Christchurch. It is a plan for action, for starting now to make the transformational shifts needed to secure the future of Greater Christchurch. This includes a clear pathway for how the city region will create prosperous and well-functioning urban environments, and build greater resilience in the context of the changing environment. It sets out what the priorities are and what needs to happen to achieve them.

Its **key overarching** directions include a focus on targeted intensification in centres and along public transport corridors, along with the prosperous development of kāinga nohoanga on Māori Land and within urban areas.

The direction set out in the plan is supported by commitments across central government, local government and mana whenua to partner and invest in shared priorities for Greater Christchurch, to ensure the city region remains a great place to live for all. The implementation of the plan will form the ongoing work programme of the partnership.

Acknowledging Te Tiriti and Rangatiratanga

The contemporary relationship between Ngāi Tahu whānui and the Crown is defined by three core documents: Te Tiriti o Waitangi, the Ngāi Tahu Deed of Settlement 1997 and the Ngāi Tahu Claims Settlement Act 1998.

Papatipu Rūnanga expect that the partners will honour Te Tiriti o Waitangi and the principles upon which it is founded, including principles of Partnership and recognition of their rangatiratanga status.

In making its apology in 1998, the Crown acknowledged that Ngāi Tahu holds rangatiratanga within the Ngāi Tahu takiwā. Further, the Te Rūnanga o Ngāi Tahu Declaration of Membership Order 2001 establishes individual Papatipu Rūnanga as the entities with responsibility for resources and the protection of tribal interests within their respective takiwā.

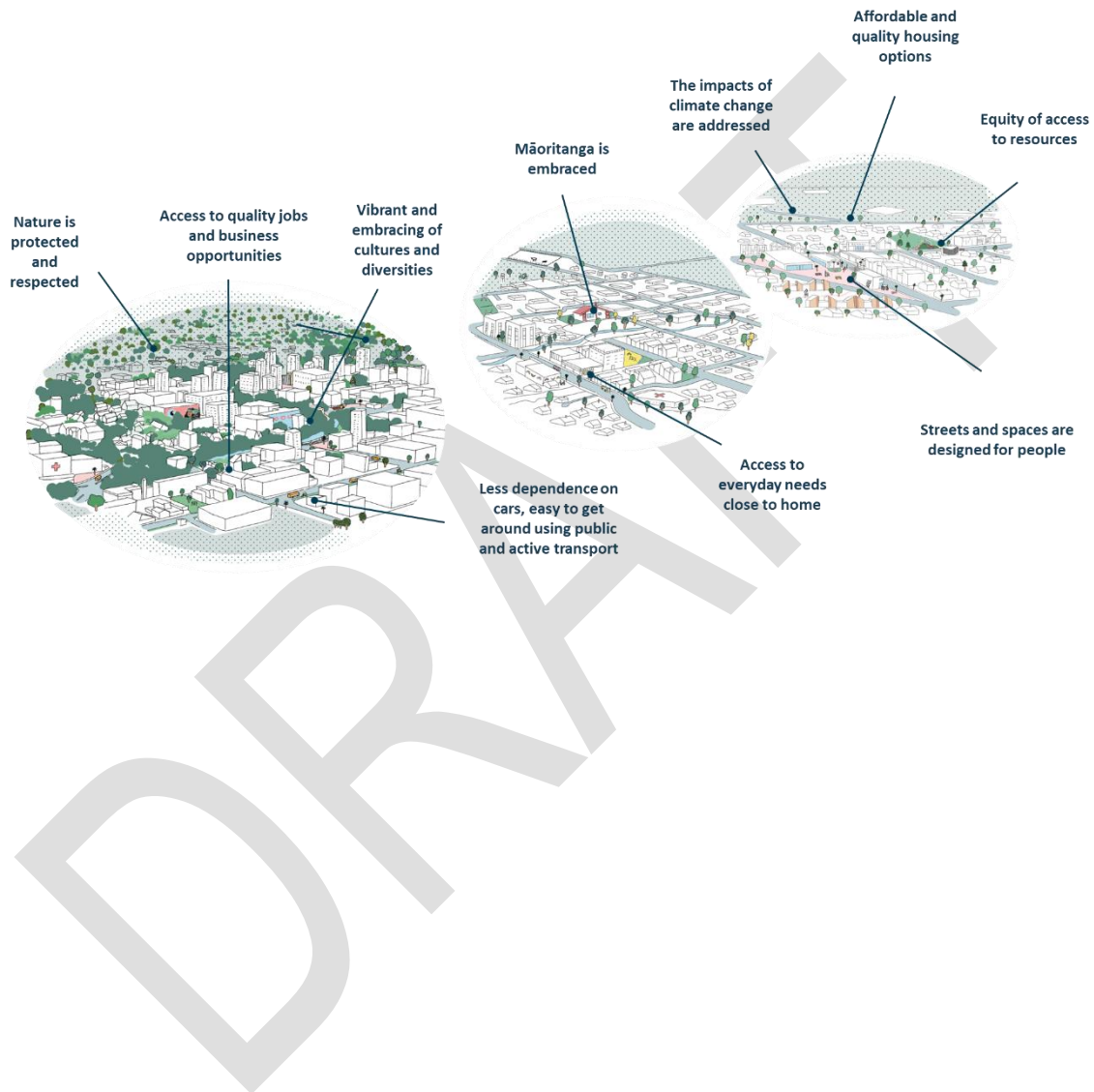
These documents and matters have informed the nature and manner of engagement and collaboration between the Papatipu Rūnanga and the partners involved in the development of this Spatial Plan, and the commitments made to actively support and assist mana whenua fulfil their priorities.

DRAFT

The aspirations for Greater Christchurch – a place to live well

The Spatial Plan seeks to deliver on the community aspirations for Greater Christchurch – as a place that supports the wellbeing of residents both now and for generations still to come. **where the interrelationship between people and nature underpins a focus on intergenerational wellbeing, and positions Greater Christchurch to be a place that supports the wellbeing of generations still to come.**

Figure 1: Community aspirations for Greater Christchurch in 2050



The Greater Christchurch area

Greater Christchurch is found at the meeting point of the Canterbury Plains, the Pacific Ocean, and the volcanic remnants of Whakaraupō / Lyttelton and Te Pātaka a Rākaihautū / Banks Peninsula.

It extends from Rangiora in the north to Lincoln in the south, and from Rolleston in the west to Sumner in the east. It includes the flat lands and Port Hill areas of Ōtautahi Christchurch, and the surrounding towns and rural areas. Its landscape is dominated by rivers, lakes, estuaries, coastal lagoons, wetlands and springs.

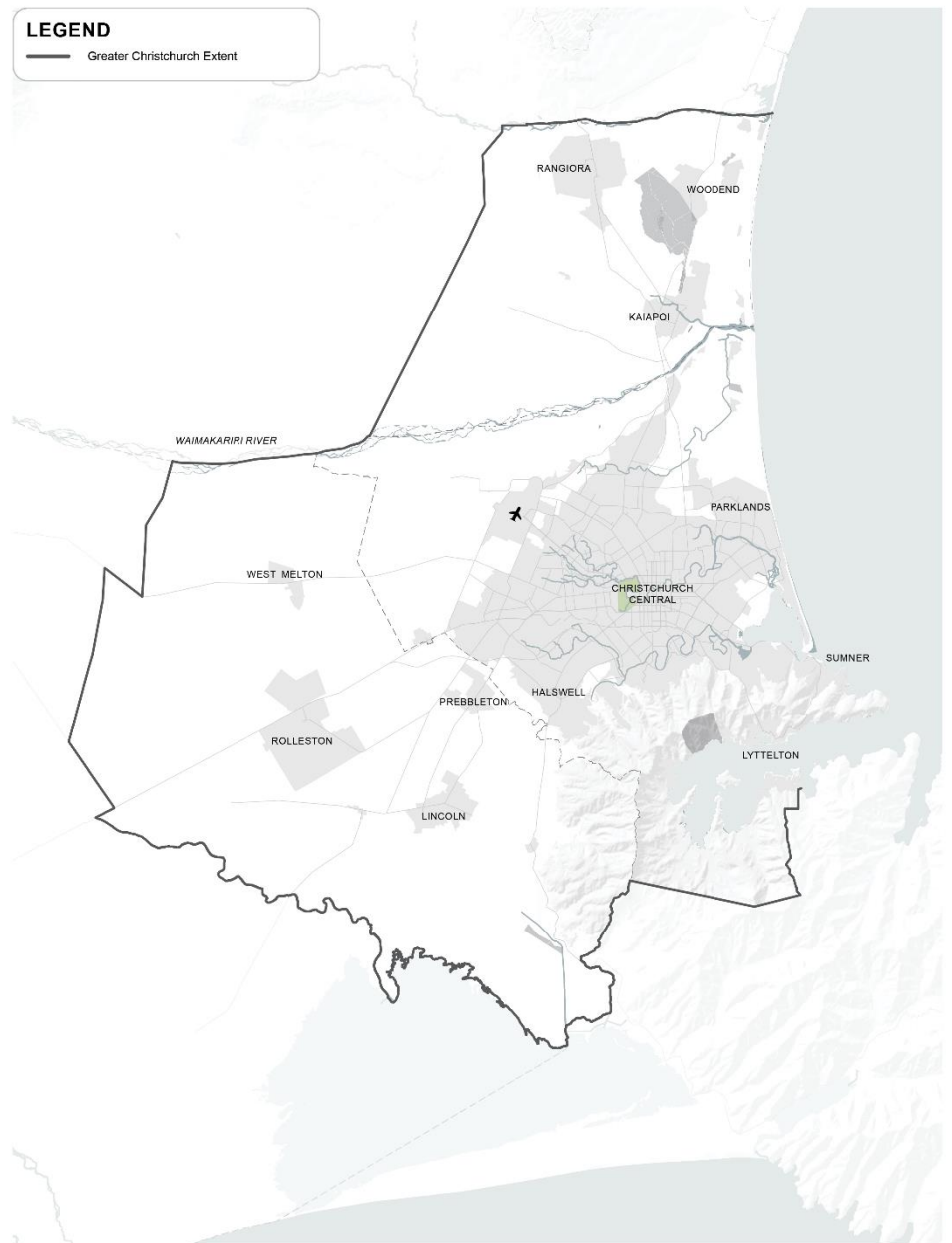
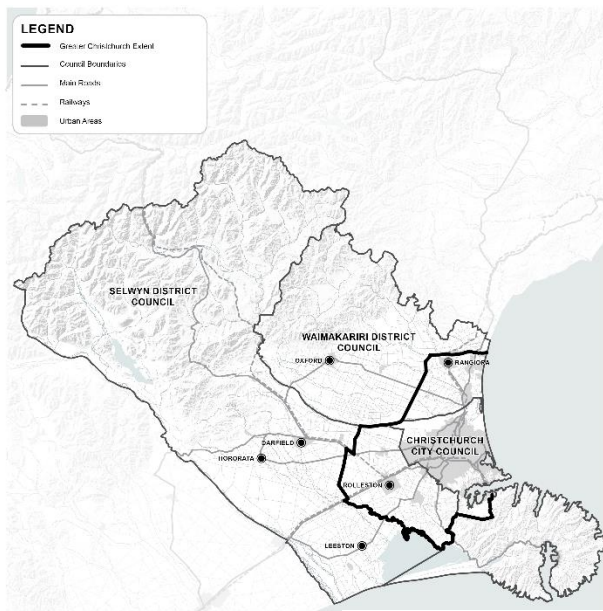
Greater Christchurch includes parts of three territorial authorities: Christchurch City, Selwyn District and Waimakariri District. It is also part of a cultural landscape that holds significant historic and contemporary cultural importance for Ngāi Tahu whānui.

Greater Christchurch traverses the takiwā of three Papatipu Rūnanga: Te Ngāi Tūāhuriri, Taumutu and Te Hapū o Ngāti Wheke (Rāpaki), with the marae of Te Ngāi Tūāhuriri and Te Hapū o Ngāti Wheke being located within the Greater Christchurch area. The marae associated with each of the Papatipu Rūnanga are the beating hearts of tribal identity and centres for cultural, social and economic activities.

Greater Christchurch sits within and has deep connections with the wider Waitaha / Canterbury region.

The geographic extent of Greater Christchurch is shown in *Map 1*.

Map 1: The geographic area of Greater Christchurch



Context

How Greater Christchurch has grown

The Greater Christchurch area has been inhabited by Māori for settlement, resource gathering and exercising of cultural practices for more than 1,200 years. The earliest peoples in the area were the Waitaha, who were succeeded by Ngāti Mamoe. Ngāti Mamoe were followed soon after by hapū who came to be known as Ngāi Tahu.

The coastline of Te tai o Mahaanui acted as an important route for trade and travel, while the water bodies and forests in the area provided a rich source of mahinga kai.

The abundance of resources in the area attracted European settlers from the 1800s. Christchurch became a centre for provincial government, as well as the market, logistics, services and education hub for the surrounding region. Farming was the city's first industry, reflecting the pre-eminence of the Waitaha / Canterbury region as a farming province.

The way that Christchurch and the towns in Selwyn and Waimakariri have grown over time has been enabled by the availability of flat land on the Canterbury Plains that is relatively easy to subdivide and service. The ~~introduction~~ **increased ownership** of the private car during the middle of the 20th century also enabled the urban area to develop beyond the inner city and along tram lines, to the suburbs and surrounding towns. The reliance on the car for travel has since become ingrained in the fabric of Greater Christchurch.

In 2010 and 2011, a series of earthquakes caused widespread damage to Greater Christchurch. It resulted in the permanent displacement of whole neighbourhoods in the eastern areas of Christchurch and in Kaiapoi, and demolition of many buildings in Christchurch's Central City. **This included demolition of a significant number of Heritage Listed buildings.** This led to a substantial shift of households and businesses to the western areas of Christchurch and towns in Selwyn and Waimakariri.

The private and public sectors have made considerable investments since. The Central City in particular has benefitted from modern infrastructure, new civic assets, urban realm improvements, and large residential and commercial developments. The rebuild of the Central City has been the most ambitious urban renewal project in Aotearoa New Zealand's history and is once again a place that is attractive to people and businesses.

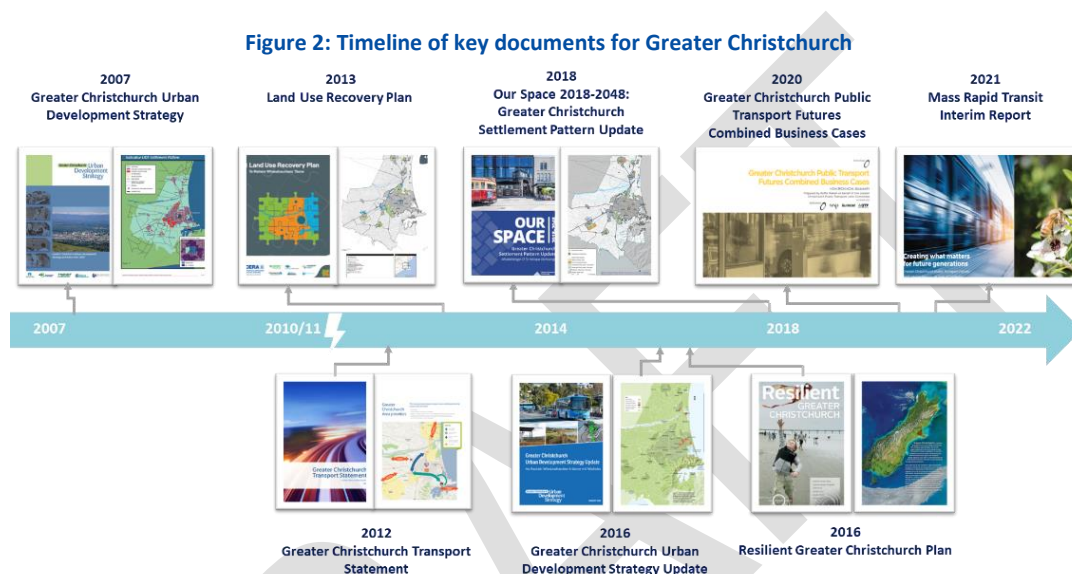
Greater Christchurch's population ~~exceeds~~ **of around** half a million people, ~~which~~ represents more than 80 percent of the Waitaha / Canterbury population and almost half of the Te Waipounamu / South Island population. Strong population growth in Greater Christchurch over recent years reflects its highly valued lifestyle, including the easy access to green spaces and the outdoors, the sense of community, the relative affordability of living, and the growing vibrancy. It's also benefitted from immigration, which has created a rich and diverse population.

Greater Christchurch has developed into the primary economic hub and commercial centre for the Waitaha / Canterbury region and Te Waipounamu / South Island, supporting a number of nationally important economic assets. This includes a large business sector, four tertiary institutions, a number of research institutions, an international airport, a sea port and two inland ports.

Planning and policy context

Building on previous growth strategies

The first strategic growth strategy developed for Greater Christchurch was the Greater Christchurch Urban Development Strategy in 2007 (which was updated in 2016). The collaborative work of the Greater Christchurch Partnership since has been guided by this strategy, including the planning undertaken to accommodate the large number of households and businesses displaced after the earthquakes in 2010 and 2011.

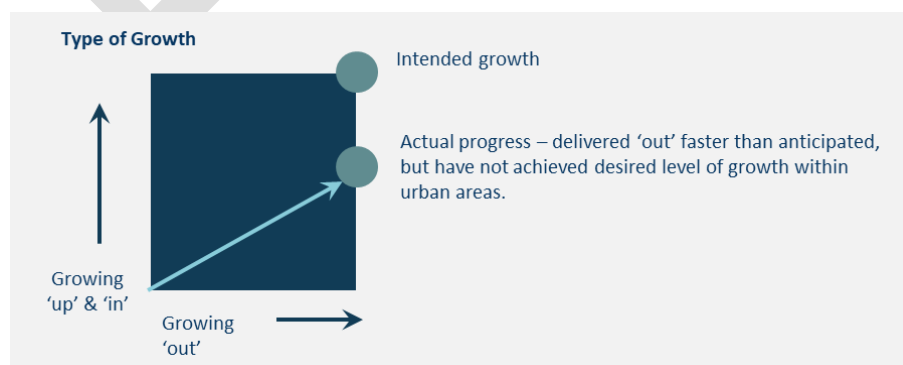


This Spatial Plan builds on and replaces the previous plans and strategies developed for Greater Christchurch, but does not seek a fundamental change from their strategic direction.

It provides an up-to-date look at how Greater Christchurch has evolved over recent years, and the strategic opportunities and challenges for taking the city region forward.

It recognises that Greater Christchurch has seen growth through the expansion of urban areas happen faster than anticipated and growth through intensification of urban areas not achieve anticipated levels. This was a by-product of the earthquakes and an acknowledged divergence from the planned growth direction.

Figure 3: Intended versus actual pattern of growth

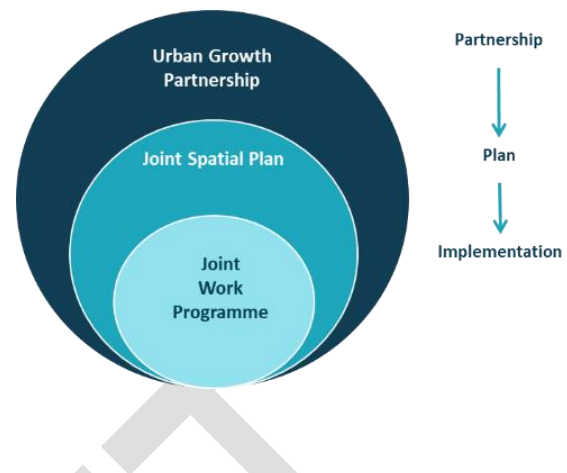


Delivering on national direction

The Spatial Plan has been prepared under the Urban Growth Agenda – a central government programme to improve coordination between central government, local government and mana whenua in high growth urban areas.

The Spatial Plan is the first priority of the Urban Growth Partnership for Greater Christchurch – the Whakawhanake Kāinga Komiti. The Komiti’s priorities strongly align with the objectives of the Urban Growth Agenda and wider national direction, and reflects the issues facing Greater Christchurch.

Figure 4: Components of the Urban Growth Partnerships programme



Whakawhanake Kāinga Komiti’s priorities

Create a well-functioning and sustainable urban environment. Priority will be given to:

- Decarbonising the transport system
- Increasing resilience to natural hazards and the effects of climate change
- Accelerating the provision of quality, affordable housing
- Improving access to employment, education and services.

The Spatial Plan satisfies the requirements of a future development strategy under the National Policy Statement on Urban Development. This includes setting out how well-functioning urban environments will be achieved, and how sufficient housing and business development capacity will be provided to meet expected demand over the next 30 years.

Relevant national **policy** direction **that has informed the Spatial Plan** includes the National Policy Statement on Urban Development, Government Policy Statement on Housing and Urban Development, Government Policy Statement on Land Transport, the Emissions Reduction Plan, and **every** other national policy statements relating to highly productive land and freshwater management **under the Resource Management Act 1991.**

The Spatial Plan satisfies the requirements of a future development strategy under the National Policy Statement on Urban Development. This includes setting out how well-functioning urban environments will be achieved, and how sufficient housing and business development capacity will be provided to meet expected demand over the next 30 years.

What this national direction requires of the Spatial Plan is summarised below.

Well-functioning urban environments

Contribute to well-functioning urban environments, which at a minimum:

- Have or enable a variety of homes that meet the needs, in terms of type, price and location, of different households; and
- Have or enable a variety of homes that enable Māori to express their cultural traditions and norms; and
- Have or enable a variety of sites that are suitable for different business sectors in terms of location and site size; and
- Have good accessibility for all people between housing, jobs, community services, natural spaces and open spaces, including by way of public or active transport; and
- Support, and limit as much as possible adverse impacts on, the competitive operation of land and development markets; and
- Support reductions in greenhouse gas emissions; and
- Are resilient to the likely current and future effects of climate change.

A low emissions future

Plan for an urban form and transport system that substantially reduces greenhouse gas emissions, including supporting a transformational shift in transport choices.

A healthy natural environment

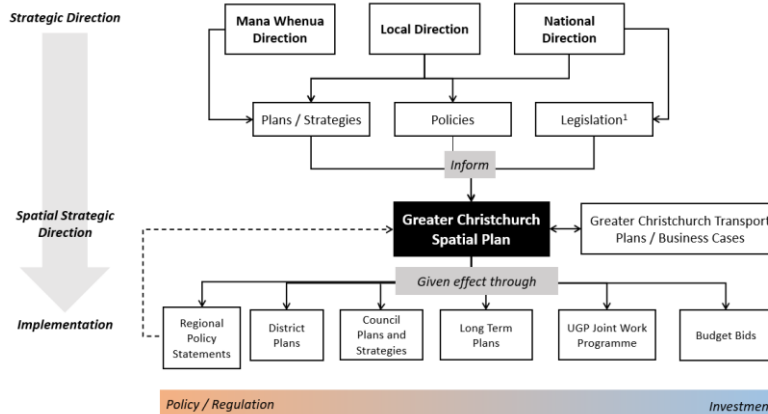
Protect highly productive land for food and fibre production, manage water bodies in a way that gives effect to Te Mana o te Wai, and conserve the natural environment for the benefit of future generations.



Aligning with local and regional planning processes

The Greater Christchurch councils are also progressing their own local and regional planning processes. Many of these have informed the Spatial Plan and some will help implement the direction of the plan.

Figure 5: Planning context for the Spatial Plan



Amend Figure 5 as follows:

- Replace 'Inform' with '**Informed by**' and 'Give effect to' with '**Informs**'
- Amend to include the evidence-base, feedback received through the HuiHui Mai engagement and pre-emptively the feedback received through the consultation as the missing items required by clause 3.18 of the NPS-UD that have informed the draft Spatial Plan.

Related planning processes currently underway:

- Councils are implementing the Medium Density Residential Standards from the Resource Management (Enabling Housing Supply and Other Matters) Amendment Act. Christchurch City Council notified changes to its District Plan in March 2023. Selwyn and Waimakariri District Councils have incorporated changes into their district plan reviews as variations, with decisions expected mid-2023 for Selwyn and the last quarter of 2024 for Waimakariri.
- Selwyn and Waimakariri District Councils are reviewing their district plans. For Selwyn, hearings are underway with decisions expected mid-2023. For Waimakariri, hearings will run from May 2023 to May 2024 with decisions expected late-2024.
- Canterbury Regional Council is reviewing the **regional planning framework for Canterbury. A new Regional Policy Statement is expected to be notified at the end of 2024. This process seeks to align the regional planning framework with national direction such as the National Policy Statement for Freshwater Management 2020, including Te Mana o te Wai. It also Regional Policy Statement, which includes a review of the airport noise contours relating to Christchurch International Airport, mapping of highly productive land, and development of developing significance criteria for new greenfield areas, as well as the Regional Coastal Environment Plan and the Land and Water Regional Plan.** This review will also continue to consider, and direct, how to manage urban growth in balance with activities that occur in the rural environment.
- The Christchurch City Council is undertaking a Coastal Hazards Adaptation Framework with its coastal communities to create adaptive pathways to respond to coastal hazard risks. It is anticipated that this work will inform future changes to the District Plan. It is also anticipated that a new law 'the Climate Adaptation Act' will assist in responding to complex legal and technical issues associated with managed retreat when it is enacted.**

Mahaanui Iwi Management Plan

The Mahaanui Iwi Management Plan is an expression of kaitiakitanga and rangatiratanga from the six Papatipu Rūnanga with mana whenua rights over the lands and waters within the takiwā from the Hurunui River to the Hakatere River, and inland to Kā Tirititi o Te Moana – an area that encompasses Greater Christchurch. It is first and foremost a planning document intended to assist Papatipu Rūnanga participate in all aspects of natural and environmental management. It provides a comprehensive suite of objectives and policies that identify values, priorities and processes that should be followed in the restoration and protection of the natural environment, as well as the planning and development of urban areas. It has been a key background document to inform the development of the Spatial Plan.

DRAFT

Looking to the future

Greater Christchurch is well placed for much greater population and economic growth.

The latest projections from Stats NZ indicate Greater Christchurch's population ~~will~~ **could** grow from a population of approximately ~~530,000~~ **half a million** to ~~more than~~ **around** 700,000 by 2051. ~~This is around 170,000 more people and 77,000 more households.~~

If Greater Christchurch was to grow at the rate seen over the last 15 years, then it could reach a population of 700,000 within the next ~~25 to 30 years~~ and **in time** one million ~~within the next 60 years~~, doubling the size of today's population.

This growing population will become more ethnically diverse, with people identifying as Māori, Pacifica and Asian forming a larger share of the young people and working-age population. As the population ages and becomes more diverse, it's critical that a range of housing types and models of community living are provided so people can stay in their communities through different stages of their lives, and live with their whānau and friends.

Recent investments in infrastructure, buildings, assets and communities provides the opportunity to attract more people, business and investment to the city region. This is critical to the future of Christchurch's Central City, which remains economically vulnerable. About 40,000 people now work in the Central City, which is below pre-earthquake levels and is particularly low compared with the 115,000 people working in the central business districts of Auckland and Wellington.

Moving to a net zero emissions future, along with building the capacity of communities and ecosystems to adapt to the impacts of climate change, will be major challenges over the coming decades.

Mana whenua priorities and expectations

The Spatial Plan needs to reflect the values of mana whenua and give effect to their priorities and expectations. In summary, these expectations are that the Spatial Plan:

- Supports kāinga nohoanga on Māori Land, supported by infrastructure and improved accessibility
- Supports kāinga nohoanga within urban areas
- Protects Wāhi Tapu, Wāhi Taonga and Ngā Wai.

For mana whenua's priorities regarding the environment, refer to *Opportunity 3: Protect, restore and enhance the natural environment, with particular focus on te ao Māori, the enhancement of biodiversity, the connectivity between natural areas and accessibility for people.*

The spatial strategy

Greater Christchurch has grown and changed throughout its history, and will continue to do so into the future. It is essential that the city region develops in a way that provides the best economic, social, cultural and environmental outcomes for its people and places, both for present generations and those still to come.

Six opportunities have been identified for how the Spatial Plan can help close the gap between the current and desired future states for Greater Christchurch, together with a number of directions that will guide the work of the partnership and individual partners to address these opportunities. Two overarching directions particularly shape the desired pattern of growth.

Five key moves have also been identified that will be fundamental to realising the transformational shifts required to achieve the desired future and support inter-generational wellbeing.

Together, these opportunities, directions and key moves make up the spatial strategy for Greater Christchurch. A visual representation of the strategy is provided in *Map 2*.

DRAFT

Opportunities

<p>#1</p> <p>Protect, restore and enhance historic heritage and sites and areas of significance to Māori, and provide for people's physical and spiritual connection to these places</p>	<p>#2</p> <p>Reduce and manage risks so that people and communities are resilient to the impact of natural hazards and climate change</p>	<p>#3</p> <p>Protect, restore and enhance the natural environment, with particular focus on te ao Māori, the enhancement of biodiversity, the connectivity between natural areas and accessibility for people</p>	<p>#4</p> <p>Enable diverse, <u>quality</u>, and affordable housing in locations that support thriving neighbourhoods that provide for people's day-to-day needs</p>	<p>#5</p> <p>Provide space for businesses and the economy to prosper in a low carbon future</p>	<p>#6</p> <p>Prioritise sustainable <u>and accessible</u> transport choices to move people and goods in a way that significantly reduces greenhouse gas emissions and enables access to social, cultural and economic opportunities</p>
---	--	--	---	--	--

Overarching Directions

Focus growth through targeted intensification in urban and town centres and along public transport corridors
Enable the prosperous development of kāinga nohoanga on Māori Land and within urban areas

Directions

<p>1.1 Avoid Protect urban development over Wāhi Tapu from urban development</p> <p>1.2 Protect, restore and enhance Wāhi Taonga and Ngā Wai</p> <p><u>1.3 Protect, recognise, and restore the historic heritage of Greater Christchurch.</u></p>	<p>2.1 Focus and incentivise growth in areas free from significant risks from natural hazards</p> <p>2.2 Strengthen the resilience of communities and ecosystems to climate change and natural hazards</p>	<p>3.1 Avoid development in Protect areas with significant natural values</p> <p>3.2 Prioritise the health and wellbeing of water bodies</p> <p>3.3 Enhance and expand the network of green spaces</p> <p>3.4 Protect highly productive land for food production</p> <p>3.5 Explore the opportunity of a green belt around urban areas</p>	<p>4.1 Enable the prosperous development of kāinga nohoanga on Māori Reserve Land, supported by infrastructure and improved accessibility to transport networks and services; along with the development of kāinga nohoanga within urban areas</p> <p>4.2 Ensure at least sufficient development capacity is provided or planned for to meet demand</p> <p>4.3 Focus, and incentivise, intensification of housing to areas that support the desired pattern of growth</p> <p>4.4 Provide housing choice and affordability</p> <p>4.5 Deliver thriving neighbourhoods with quality developments, quality housing and supporting community infrastructure</p>	<p>5.1 At least sufficient land is provided for commercial and industrial uses well integrated with transport links and the centres network</p> <p>5.2 A well connected centres network that strengthens Greater Christchurch's economic competitiveness and performance, leverages economic assets, and provides people with easy access to employment and services</p> <p>5.3 Provision of strategic infrastructure that is resilient, efficient, integrated and meets the needs of a modern society and economy</p> <p><u>5.4 Urban growth occurs in locations that do not compromise the ability of primary production activities to expand or change, including adapting to a lower emissions economy</u></p> <p><u>5.5 Urban Growth occurs in locations and patterns that protects strategic regionally and nationally important tertiary institutes.</u></p>	<p>6.1 Enable safe, attractive and connected opportunities for walking, cycling and other micro mobility</p> <p>6.2 Significantly improve public transport connections between key centres</p> <p>6.3 Improve accessibility to Māori Reserve Land to support kāinga nohoanga</p> <p>6.4 Develop innovative measures to encourage people to change their travel behaviours</p> <p>6.5 Maintain and protect connected freight network</p>
---	--	--	--	---	---

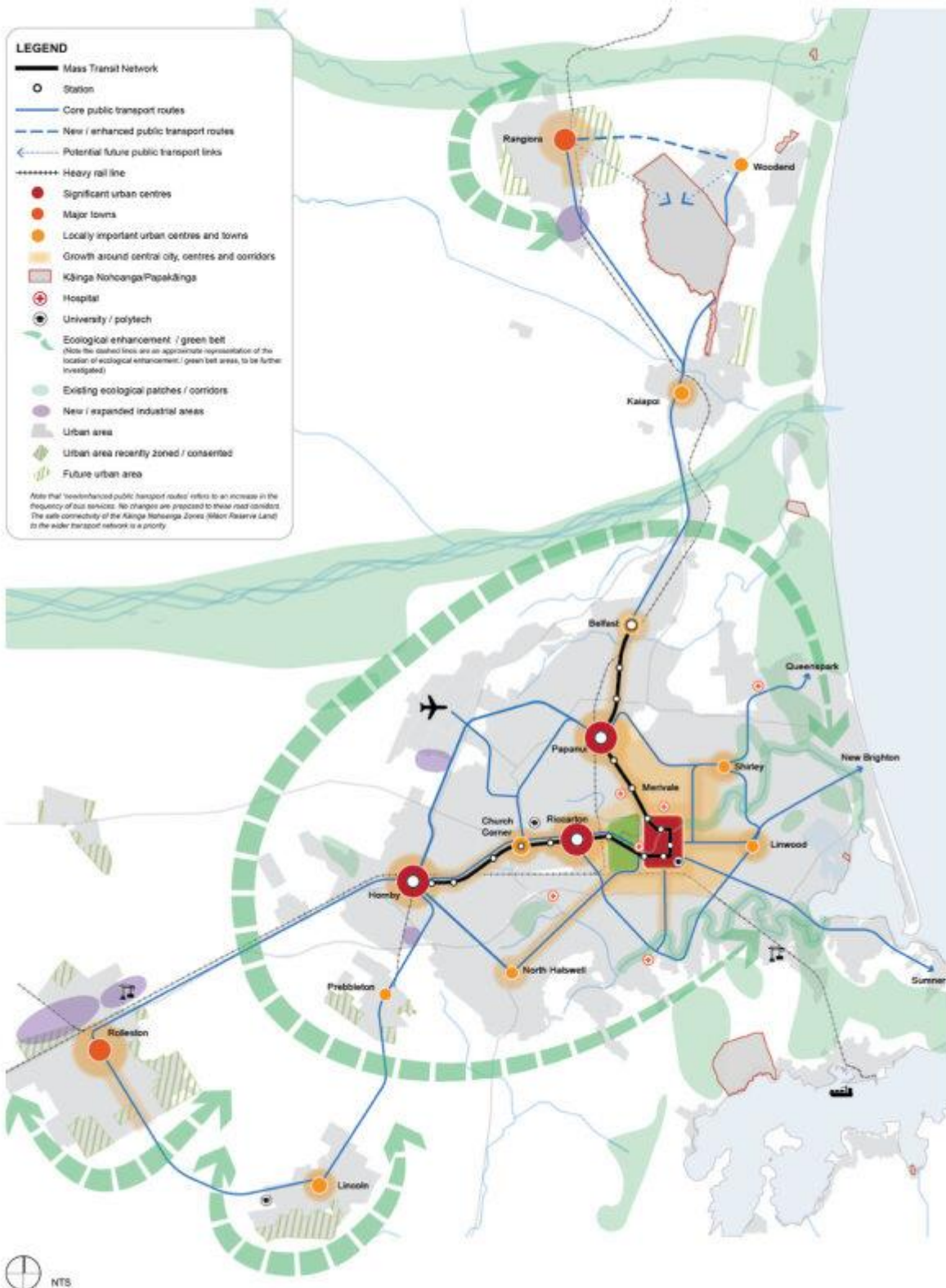
Key moves

<p>The prosperous development of kāinga nohoanga</p>	<p>A strengthened network of urban and town centres</p>	<p>A mass rapid transit system</p>	<p>A collective focus on unlocking the potential of Priority Areas</p>	<p>An enhanced and expanded blue-green network</p>
--	---	------------------------------------	--	--

DRAFT

Map 2: The Greater Christchurch spatial strategy (1 million people)

DRAFT



Amend Map 2 as follows:

- a. Add notation - Ecological enhancement / green belt - The dashed lines are an approximate representation of the location of ecological enhancement / green belt areas, to be further investigated.
- b. Amend to align with new / expanded business (industrial and commercial areas) that were rezoned by the partially operative Selwyn District Plan.
- c. Amend to reflect resultant changes and the status of private plan changes, district plan reviews, IPIs and referred projects under the COVID-19 Recovery (Fast-track Consenting) Act 2002
- d. Amend to include any existing LLRZ in Greater Christchurch as part of the existing urban area.
- e. Amend to correctly show the Ōpāwaho Heathcote River.
- f. Amend legend item 'growth around central city, centres and corridors' to correspond to the symbology on the maps
- g. Identify **Prebbleton** as a 'locally important urban centre and town'
- h. Include symbols for Lyttelton Port and the inland ports.
- i. Show the complete connections for the 'Core Public Transport routes' heading to Queenspark, New Brighton and Sumner.

DRAFT

Overarching directions

Focus growth through targeted intensification in urban and town centres and along public transport corridors

The desired pattern of growth in Greater Christchurch that best delivers on the six opportunities is to focus household and business growth through greater intensification in urban and town centres, and along public transport corridors. Concentrating growth in this way has many benefits:

- Reduces urban expansion over Wāhi Tapu and Wāhi Taonga.
- Provides opportunities to restore and enhance the natural environment.
- Has the least impact on highly productive soils and most likely to deliver positive outcomes for air quality and water use.
- Is more likely to achieve policy directives for integrated planning (land and water).
- Provides a better opportunity to mitigate risks associated with natural hazards.
- Provides the best opportunity to achieve higher density housing consistent with trends showing an increased demand for smaller homes.
- Provides the best accessibility and would support lower vehicle kilometres travelled and greenhouse gas emissions from transport.
- Provides the best opportunities for economic agglomeration and achieves more efficient and effective use of land and resources.
- Provides economies of scale to fund delivery.

Enable the prosperous development of kāinga nohoanga on Māori Land and within urban areas

The prosperous development of kāinga nohoanga is fundamental to the future of Greater Christchurch. The Spatial Plan sets out the commitment of partners to deliver on mana whenua's priorities and expectations in regard to kāinga nohoanga. This includes enabling the development of kāinga nohoanga on Māori Land, supported by infrastructure and improved accessibility to transport networks and services; along with the development of kāinga nohoanga within urban areas to enable mana whenua to provide for their customs and wellbeing. Prosperous kāinga nohoanga is essential to achieving well-functioning urban environments.

Key moves

The prosperous development of kāinga nohoanga

On Māori Reserve Land

In 1848, the Crown acquired some 20 million acres of land from Ngāi Tahu through the Canterbury Deed of Purchase. The terms agreed as part of the land purchase included the setting aside of kāinga nohoanga (translated as places of residence) as self-governing reserves.

With each reserve came the rights to mahinga kai; to develop land (including subdivision) and community facilities; to develop a sustainable and growing economic base to sustain future generations; and an enduring timeframe – meaning that the reserves would belong to the people and their descendants without impediment for all of the future.

Within Greater Christchurch, Māori Reserve Land is located at:

- MR875, Rāpaki (zoned Papakāinga/Kāinga Nohoanga)
- Tuahiwi MR873 (proposed to be zoned Special Purpose Kāinga Nohoanga)
- Kaiapoi Pā (proposed to be zoned Special Purpose Kāinga Nohoanga)
- Pūharakekehenui MR892 (zoned Rural)
- MR959 east side of Te Waihora (zoned Rural)

The Crown's agreement to the development and governance of the reserves has never been fulfilled.

Multiple statutes have removed these rights, including successive planning statutes from the Town and Country Planning Act 1953 to the Resource Management Act 1991. Through this legislation, Māori Reserves have been zoned as Rural – preventing subdivision, housing, social and educational infrastructure, educational facilities and the development of prosperous economic activities. This has impacted the prosperity and wellbeing of mana whenua.

Since 2015, there have been changes made to the Christchurch District Plan and the Proposed Waimakariri and Selwyn District Plans to remove zoning impediments to the development of Māori Reserves. While these changes have gone some way to providing for development of Māori Land, further changes are needed to remove residual impediments.

Further, strategic planning has failed to recognise kāinga nohoanga as it does not fit the western paradigm of residential, commercial, industrial and rural activities. Accordingly, Māori Land has never been identified as a future or priority development area towards which investment should be directed.

The changes that have been made to district plans have not, in all cases, been supported with investment for infrastructure. This largely reflects that councils are geared towards the development of staged residential subdivisions, leaving tikanga and the inter-generational development of Māori Land and kāinga nohoanga to fall outside operational processes, and to later and unknown commitments and delivery.

In particular, infrastructure has become a significant barrier to the development of Māori Land within MR873 at Tuahiwi. It is also noted that MR892 and MR959 should be rezoned for Kāinga Nohoanga purposes.

Partnership and work between mana whenua and councils is needed to remove residual planning barriers to the development of Māori Land in the Papakāinga / Kāinga Nohoanga Zone in the Christchurch District Plan and the proposed Special Purpose (Kāinga Nohoanga) Zone in Waimakariri. Infrastructure is also required to

service Māori Land within the full extents of the original Māori Reserves, with a specific focus on MR873 at Tuahiwi. This investment includes improved accessibility via public and active modes of transport.

Within urban areas

Many Māori live within Greater Christchurch's urban area where housing is typically provided through general residential, medium and high density zoning – none of which contemplate or appropriately provide for kāinga nohoanga as a housing outcome. Consequently, the cultural needs of Māori have been overlooked.

The National Policy Statement on Urban Development requires that a well-functioning urban environment has, or enables, a variety of homes, and that this includes homes that enable Māori to express their cultural traditions and norms. Similarly, the Resource Management (Enabling Housing Supply and Other Matters) Amendment Act allows amendments to district plans to enable papakāinga. This is not limited to specific geographic areas, such as Māori Reserves, or any particular urban zoning. This necessitates dispensing with those policies that previously limited cultural housing initiatives to Māori Reserves.

Partnership and work between mana whenua and councils is also needed to create a planning framework that will enable kāinga nohoanga within the urban areas of Greater Christchurch.

DRAFT

A strengthened network of urban and town centres

There is a network of urban and town centres across Greater Christchurch. They vary by the populations they serve, the range of activities and services they provide, and their level of accessibility by public transport.

Defining the role and function of these centres helps to plan their ongoing development as focal points for their communities, and in some cases, as the focus for significant growth in the future.

Centre	Purpose	Locations
Significant urban centres	Focusing employment and service functions in a small number of integrated, significant employment centres and major towns to improve the productivity and growth of economic activity, attract additional business investment, support a vibrant and viable Central City, and better leverage and integrate economic assets.	<ul style="list-style-type: none"> • Central City (primary centre) • Riccarton corridor • Hornby • Papanui / Merivale corridor • Papanui
Major towns		<ul style="list-style-type: none"> • Rolleston • Rangiora
Locally important urban centres and towns	Supporting greater intensification of people, services and employment to provide better co-location of people with amenities and employment, and provide better connections through public and active modes of transport.	<ul style="list-style-type: none"> • Shirley • Linwood • North Halswell • Belfast / Northwood • Lincoln • <u>Prebbleton</u> • Kaiapoi • Ravenswood / Pegasus / Woodend • Key towns outside Greater Christchurch (including Darfield, Leeston, Oxford) • Corridors around other high-frequency public transport routes
Key business areas	Providing space for industrial activity and employment primarily; with freight accessibility, as well as accessibility for workers via public and active modes of transport, being important.	<ul style="list-style-type: none"> • Christchurch Airport / Russley • South of the Central City • Southern industrial spine (including iZone) • Port of Lyttelton • Other business areas

The significant urban centres in Christchurch, and the major towns in Selwyn and Waimakariri, will have an important role to play in accommodating higher levels of growth in the future.

<p>Central City</p>	<p>The Central City will remain the primary centre for Greater Christchurch.</p> <p>The Central City is currently underperforming economically, which undermines its vibrancy and long term viability; limits economic concentration; and reduces the attractiveness of Greater Christchurch to business, tourism and talent. The opportunity is to strengthen the form and function of the Central City by:</p> <ul style="list-style-type: none"> • Maintaining and supporting its primacy as the main leisure, tourism, economic and transport hub of Greater Christchurch • Incentivising, enabling and supporting it as a focal point for: <ul style="list-style-type: none"> ○ Business attraction, with significant increases in employment density, high-rise commercial developments, flagship retail, head offices and knowledge intensive services ○ Redevelopment for the highest residential densities (ranging from 100 to 200 households per hectare), including multi-storey townhouses, apartments and mixed-use developments • Transitioning the south and south-east general business and industrial areas to comprehensive higher density residential and mixed-use developments.
<p>Riccarton corridor</p> <p>Hagley Park to Upper Riccarton</p>	<p>The opportunity is to develop the currently retail orientated areas of the Riccarton corridor for commercial development and business investment. There is the opportunity to extend knowledge-intensive services, high value jobs and innovative activity from the Central City, linking with the University of Canterbury, along the corridor; supported by high frequency public transport, and over time, mass rapid transit.</p> <p>There is also the opportunity to incentivise and provide for multi-storey townhouses and apartments, achieving average density yields ranging between 70 and 150 households per hectare.</p>
<p>Papanui / Merivale corridor</p> <p>Central City to Papanui</p>	<p>The opportunity is to build on the existing strong retail, hospital / health sector and tourism accommodation provision to provide an intensified corridor connecting through Merivale to the Central City; noting that the Papanui / Merivale corridor is primarily focused on residential (50 to 100 households per hectare), with limited commercial. There is the opportunity to leverage this potential mass rapid transit route.</p>
<p>Papanui</p>	<p>The opportunity is to build on this existing retail and service centre for north Christchurch to provide higher density residential (70 to 100 households per hectare), and address poor quality urban form through regeneration and significant brownfield redevelopment opportunities. The opportunity is to provide a stronger, higher quality northern service centre in Papanui, with high density housing linked by high frequency public transport.</p>
<p>Hornby</p>	<p>The opportunity is to transition the current poor quality urban form of Hornby, which has a wide mix of business and industrial activities, low density and poor quality residential, and low tree cover, into the second sub-regional service centre after the Central City.</p>

	<p>Hornby is strategically positioned in relation to Christchurch Airport and the western areas of Greater Christchurch. There is the opportunity for regeneration and significant brownfield redevelopment to enhance its urban form, support community integration, and provide a stronger and more integrated centre core with the transition of surrounding areas from industrial to high density residential (50 to 100 households per hectare).</p>
Rangiora	<p>Rangiora is a key service and employment centre for surrounding areas; providing a mature and comprehensive offering of employment, retail and community facilities. Its residential stock is lower density.</p> <p>The opportunity is to intensify (residential and commercial) around Rangiora’s town centre, while retaining its character.</p>
Rolleston	<p>Rolleston is a strong residential growth node with high quality community infrastructure and a developing town centre providing retail and hospitality. The township is located beside iZone (an inland port and logistics hub). However, employment (commercial and industrial) is still low relative to the size of the population, with most people commuting to Christchurch for employment.</p> <p>In the short term, the opportunity is to build Rolleston’s commercial centre, with higher density residential commensurate with its population.</p>

DRAFT

A mass rapid transit system

A strengthened urban and town centres network in Greater Christchurch will need to have strong connections between centres. This will require more realistic and viable alternatives to private car use.

Mass rapid transit will not only be a transport enhancement to Greater Christchurch's infrastructure, but also a 'city shaping' initiative that is fundamental to the shift in urban form required to help achieve a net zero emissions future.

What is mass rapid transit?

Mass rapid transit is a high frequency and capacity public transport service that runs on a dedicated transport corridor, using modern high quality vehicles. These corridors prioritise public transport, as well as people on foot and bike. Mass rapid transit would be a core component of the public transport network, supported by bus services. It would be a step up from current public transport services in Greater Christchurch.

Key to the success of mass rapid transit in Greater Christchurch:

- **Reliability:** Mass rapid transit vehicles are separated from cars and given priority at intersections, which allows for public transport to be consistently on-time.
- **Speed:** Mass rapid transit travel times are similar if not faster than travelling by car.
- **Frequency:** By operating more regularly, mass rapid transit reduces wait times – 5 minutes or less on average.
- **Capacity:** Mass rapid transit vehicles are high capacity and able to move lots of people.

It is also being mentioned as 'turn-up-and-go' public transport services.

The preferred route

The preferred route for mass rapid transit connects Christchurch's Central City with the key centres of Riccarton, Papanui, Hornby and Belfast (*see Map 3*). The route runs along Papanui Road and Main North Road to the north; Riccarton Road and Main South Road to the west; and along Tuam Street, Manchester Street and Victoria Street in the Central City.

The route provides several benefits:

- A significant proportion of Greater Christchurch's growth over the next 30 years will be focused along these corridors, so development is happening in the right locations.
- It encourages investment in higher density developments and mixed-use areas.
- It provides improved accessibility to key employment areas.

Connections between the districts and the Central City will be provided using direct bus services, including:

- Better intra-district public transport connections
- Direct bus services from the districts to the Central City, principally using the motorway corridors
- Direct connections to the mass rapid transit system
- 'Enhanced' park-and-rides.

Phasing

The preferred route would likely be constructed in two phases to align with population growth and demand.

Phase one would focus on Christchurch’s inner core between Church Corner and Papanui to support intensification around highly accessible centres.

Phase two would extend the route to interchanges in Belfast and Hornby.

Map 3: Preferred mass rapid transit route – Phase 1 and 2



Modes

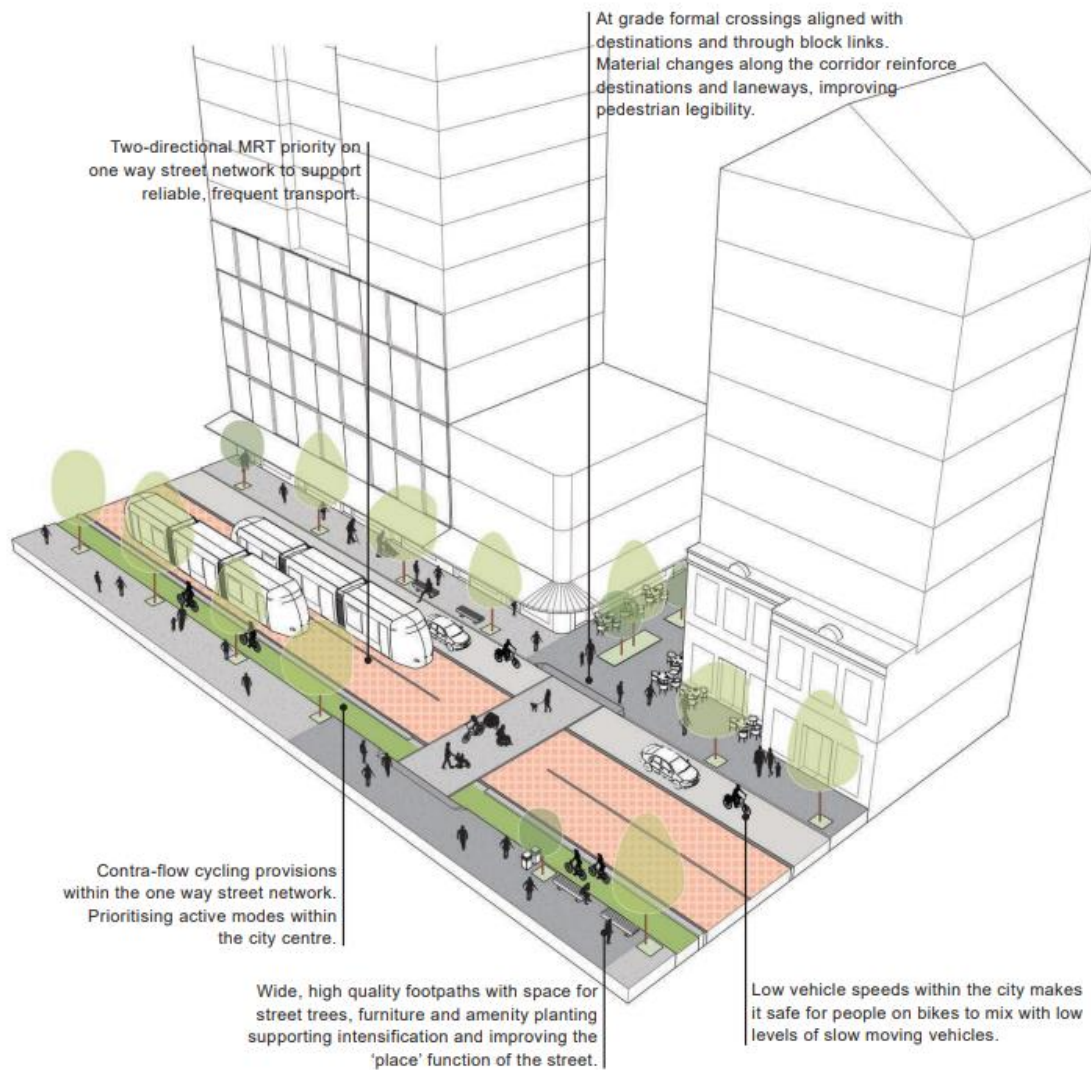
The preferred mass rapid transit route considers either a Light Rail service or a Metro bus service, as both modes have their own package of benefits and constraints. Further investigations will be undertaken in due course with respect to its adaptation to future growth, on its construction, operations and maintenance.

Urban Design of the route and centres

The introduction of mass rapid transit would require some changes to the neighbourhoods located along the preferred route to maximise the benefits of mass rapid transit. These changes would activate streets around stations and better connect people to where they want to go. This includes prioritising walking and other modes of active transport, and improving their look and feel so they are attractive and safe.

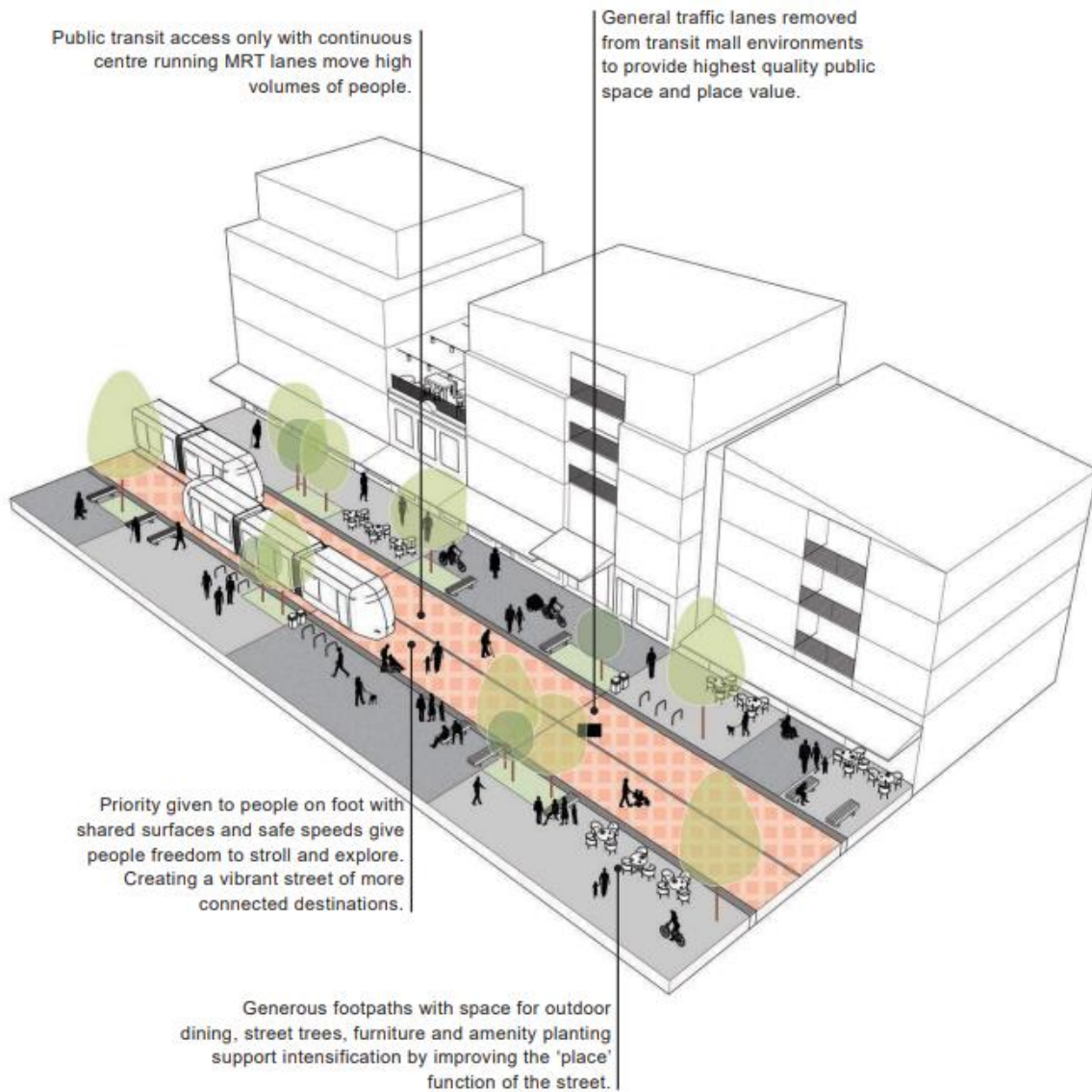
Wider streets along parts of the route would provide opportunities for green spaces, dedicated lanes for active travel and more generous footpaths.

Figure 6: Mass rapid transit neighbourhood urban realm concept



In other cases, the narrower road corridor makes it challenging to provide dedicated space for all users. Mass rapid transit would take up a large share of the road width, limiting the remaining space for other modes of transport. De-prioritising through-traffic within the corridor may be required in some instances, along with the introduction of transit malls, purchasing of land, compromising on the dedicated priority of mass rapid transit and grade separation of mass rapid transit from other vehicles.

Figure 7: Mass rapid transit mall urban realm concept



The success of a mass rapid transit system relies on a substantial shift in the urban form and in the way people travel, to be supported by a wide range of transport interventions as described in *Opportunity 6: Prioritise sustainable **and accessible** transport choices to move people and goods in a way that significantly reduces greenhouse gas emissions and enables access to social, cultural and economic opportunities.*

A collective focus on unlocking the potential of Priority Areas

What are Priority Areas?

Priority Areas are a key tool from the Urban Growth Agenda. They provide a mechanism for coordinated and focused action across multiple agencies to inform, prioritise and unlock public and private sector investment.

Typically, a Priority Area:

- Offers the opportunity for accelerated and/or significant development
- Is complex, in that achieving successful development at the required pace and scale requires a partnership approach
- Are in key locations where successful development gives effect to a spatial plan.

Priority Areas arising from Te Tiriti Partnership

The Priority Areas for Greater Christchurch include areas arising from Te Tiriti Partnership. This recognises that supporting the prosperous development of kāinga nohoanga on Māori Reserves and within urban areas is a priority to be progressed on the basis of Te Tiriti o Waitangi relationships, and as part of partners giving effect to mana whenua's priorities and expectations.

Mana whenua have provided clear expectations for kāinga nohoanga within the original extents of Māori Reserves and within the urban areas of Greater Christchurch. Further work is required in partnership with mana whenua to identify how this priority can be advanced. The advice received to date is that:

- Development of Māori Land for housing, employment and community facilities is to be determined by mana whenua, and enabled and supported by investments in infrastructure by partners in agreement with mana whenua
- The Kāinga Nohoanga Strategy will provide the guidance for implementation of kāinga nohoanga on Māori Land
- Development of housing, employment and community facilities through kāinga nohoanga within urban areas is also a priority for mana whenua
- The Kāinga Nohoanga Strategy will provide direction to partners on how to support and enable kāinga nohoanga within urban areas.

The benefit of including kāinga nohoanga on Māori Reserves and within urban areas alongside other Priority Areas for Greater Christchurch is that they will be recognised as a joint Crown, local government and mana whenua Priority Area within the context of the Urban Growth Partnership framework.

Priority Areas arising from technical evaluation

The Priority Areas identified through technical evaluation include areas that offer significant opportunities for change in Greater Christchurch. This includes accelerated urban development at the right scale; environmental change to enhance resilience; or exemplar projects that will reduce harm, encourage behaviour change or be a catalyst for private investment.

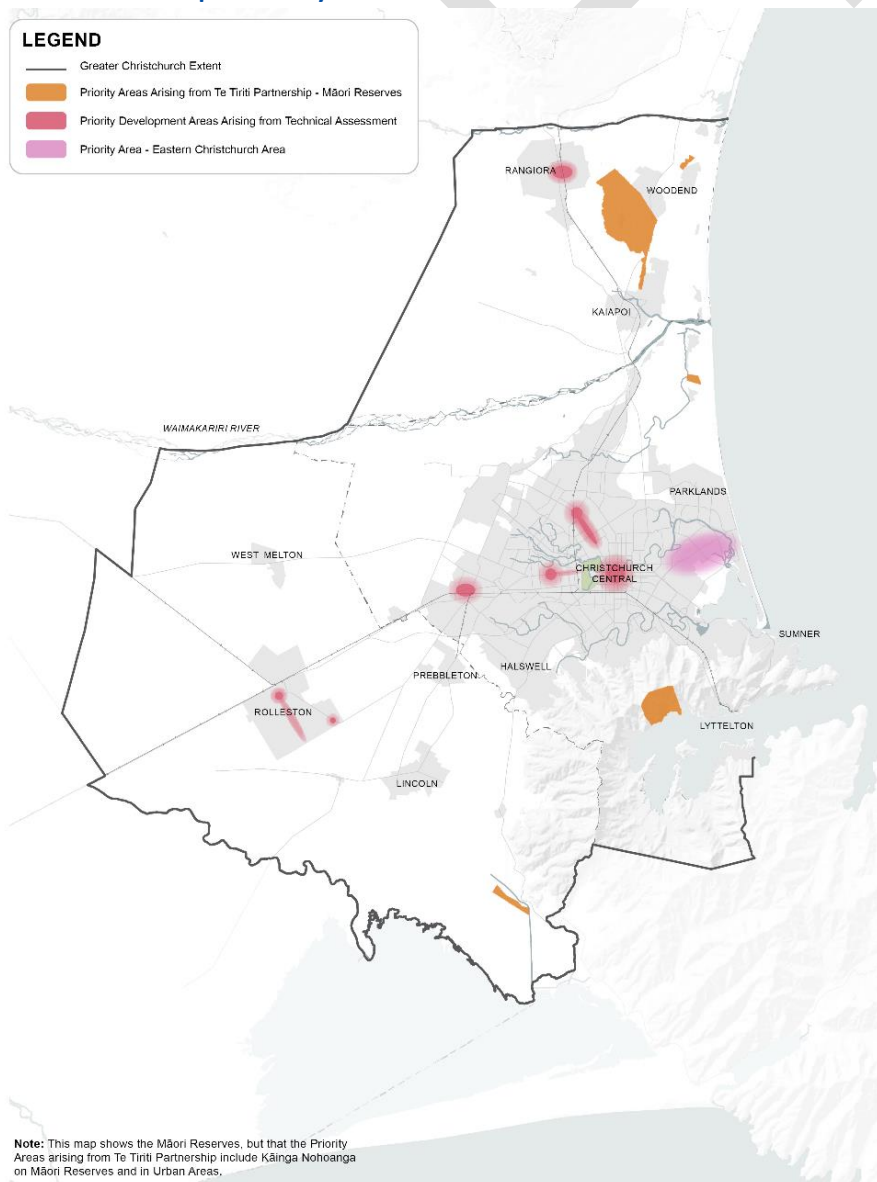
Priority Development Areas provide the opportunity to accelerate development in locations that will support the desired pattern of growth. Eastern Christchurch has also been identified as a Priority Area, rather than a Priority Development Area, to recognise the need for a partnership approach to support this area to adapt to the impacts of climate change and to strengthen resilience.

The broad locations of Greater Christchurch’s Priority Areas is shown in *Map 4*. Further work is required to define the extent and description of some of these areas.

Table 1: Priority Areas for Greater Christchurch

Priority Areas arising from Te Tiriti Partnership	Priority Areas arising from technical evaluation	
	Priority Development Areas	Priority Area
Kāinga nohoanga on Māori Reserves and within urban areas	Rangiora Town Centre and surrounds	
	Mass rapid transit phase one corridor	Papanui
		Central City
		Riccarton
	Hornby	
Rolleston Town Centre and surrounds		

Map 4: Priority Areas for Greater Christchurch



An enhanced and expanded blue-green network

What is a blue-green network?

A blue-green network provides an integrated, whole-of-system approach to the natural environment, the built environment and the interactions of people with these environments. It is a series of spaces and corridors that follow and connect water bodies, parks, green areas and the coast.

The blue elements of the network include rivers, streams, storm water drains and basins, wetlands, freshwater, and coastal water; while the green elements include trees, parks, forests, reserves and greenways.

Principles

The vision to create an enhanced and expanded blue-green network in Greater Christchurch will be guided by five principles:

- **Healthy waterbodies: Valuing, respecting, and prioritising the health and wellbeing of waterbodies, recognising the vital importance of water.**
- **Integration:** Combining green infrastructure with urban development and transport networks.
- **Connectivity:** Using a combination of green infrastructure, ecological restoration and urban design to connect people and communities with nature, and create linkages for flora and fauna.
- **Multi-functionality:** Delivering multiple ecosystem services simultaneously – restoring and enriching habitats for indigenous biodiversity, strengthening resilience to climate change, improving air quality, and increasing community access to recreational opportunities.
- **Regenerative:** Applying a holistic, whole-of-system approach that utilises development as an opportunity to replenish and restore natural processes, respond to climate change, and build community health and resilience.
- **Identity:** Recognising the unique identity of different areas and enhancing local features to create a sense of place.

Integration of principles

The blue-green network principles provide a framework to guide the further work required to achieve the objectives of regenerating the natural environment and strengthening climate resilience.

These principles will be embedded into the work of the partnership and individual partners through:

- The planning and design of the Priority Areas in Greater Christchurch
- The review of councils' planning documents and strategies
- Identifying the best mix of legislative, regulatory, financial and market-based incentives to complement the application of planning provisions
- Supporting the development of local area plans, urban greening strategies and forest plans, new guidelines and regulations that support urban greening and increased tree canopy cover, and exemplar or demonstration projects.

Greater Christchurch blue-green network strategy

The partnership will develop an integrated blue-green network strategy that will:

- Provide a coordinated approach to delivering an enhanced and expanded blue-green network, reflecting the blue-green network principles and the directions outlined under *Opportunity 3: Protect, restore and enhance the natural environment, with particular focus on te ao Māori, the enhancement of biodiversity, the connectivity between natural areas and accessibility for people*
- Spatially identify where priority improvements are required
- Include a blue-green network programme to deliver the strategy's outcomes, including project prioritisation and phasing, and funding mechanisms
- Identify associated planning protection mechanisms to facilitate implementation.

As part of developing the strategy, partners will further investigate a sub-regional green belt concept. Subject to the outcome of this work, a green belt plan could form part of the strategy or be a standalone document.

Figure 8: Green belt concept

Greenbelt Concept

The concept of a greenbelt is to provide areas of land set aside for a range of different activities that have multiple benefits. It is an area where there is a dominance of open space for nature, rural production, and recreation. A greenbelt can be used to provide a large, connected area of natural environment spaces and to limit urban expansion. The range of different land types and land uses is shown below and could be highly natural land such as an existing river or forest, through to a playground, outdoor education or campground.



Part 1 – Areas to protect, avoid and enhance

Identifying and mapping the areas to protect and avoid in the context of land development is important. This includes identifying areas to protect given their intrinsic values and importance, such as sites and areas of significance to Māori, and areas with significant natural features or landscapes; and areas to avoid given they are subject to natural hazards, **noting in some circumstances mitigation may also be appropriate.**

Areas to protect	Areas to avoid <u>or mitigate</u>
<ul style="list-style-type: none">• Sites and areas of significance to Māori• Environmental areas and features• Groundwater protection zone• Highly productive land• Strategic infrastructure	<ul style="list-style-type: none">• Areas vulnerable to a high risk of flooding• Areas vulnerable to a medium or high risk of coastal inundation, coastal erosion and tsunami inundation• Areas at risk from rockfall, cliff collapse, mass movement and fault lines

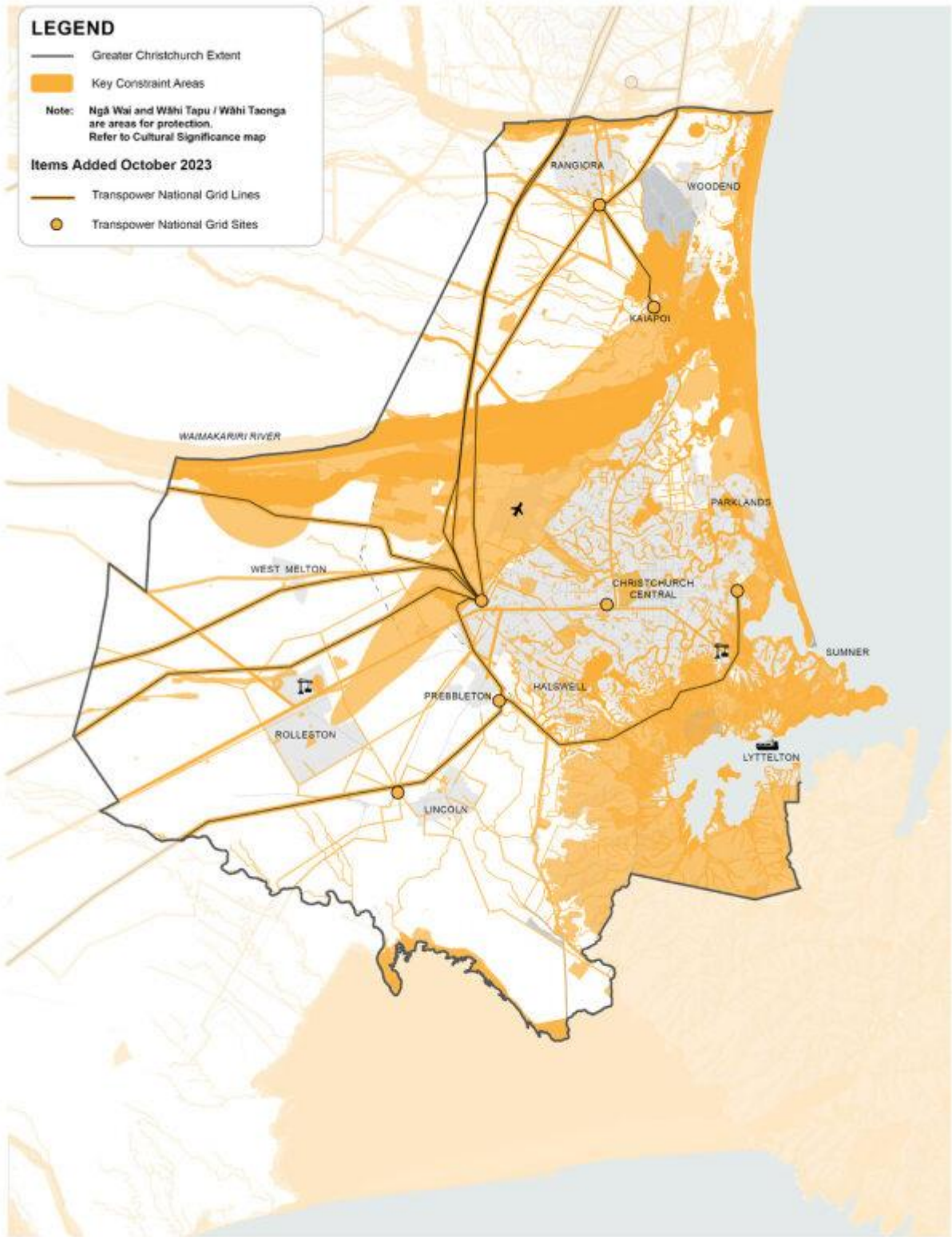
The methodology and reasoning for identifying the areas to protect and avoid, **or potentially mitigate,** is set out in the *Areas to Protect and Avoid Background Report*. The sites and areas of significance to Māori have been identified by mana whenua for district plan processes. The sensitivity of these sites and areas to urban development is a matter for engagement with mana whenua – not as part of a technical assessment.

Layering all the areas to protect and avoid **or mitigate** on top of each other highlights the most constrained areas of Greater Christchurch for development (*see Map 5*). These areas include the eastern areas along the coastline, the Port Hills and Te Pātaka a Rākaihautū / Banks Peninsula, the areas to the north-west of Christchurch, and the areas surrounding Kaiapoi. These parts of the city region are affected by a variety of natural and man-made factors. The presence of Wāhi Tapu, Wāhi Taonga and Ngā Wai are also matters of further significance, where any urban encroachment will require engagement with and consideration by mana whenua.

It's important to note that the mapping in this section is based on the best available information from each council. It is acknowledged that for flood hazard areas, this map shows differing return periods as the basis for areas to avoid, **or mitigate,** based on the best available mapping information from each territorial authority. Where this map is used for the basis of assessment of specific locations of growth, the specific risk and mitigation framework applicable to the local authority area should be used.

Map 5: Areas to protect and avoid Key constraint areas

AMENDED NOVEMBER 2023



Amend Map 5 above as follows:

- a. Include symbols for Lyttelton Port and the inland ports.
- b. Identify National Grid assets.
- c. Change legend to 'Key constraint areas'
- d. **Ensure it includes all the layers on Maps 7, 9 and 10**

Note: Changes to other maps will result in consequential changes to Map 5 as this is a 'heat' map combining other maps in the draft Spatial Plan.

Opportunity 1: Protect, restore and enhance historic heritage and sites and areas of significance to Māori, and provide for people's physical and spiritual connection to these places

*The area that encompasses Greater Christchurch is part of a wider landscape that holds significant historic and contemporary cultural associations and importance for Ngāi Tahu whānui, reflecting their occupation of the area for more than 1,200 years. The Spatial Plan recognises the importance of protecting the sites and areas of significance to Māori for generations to come, and that Papatipu Rūnanga are the entities responsible for the protection of tribal interests within their respective takiwā. **The Greater Christchurch area also has sites and buildings that are of importance in reflecting the historic heritage of the area. The Spatial Plan recognises the importance of protecting these sites and areas and integrating them into the urban environment for continued retention and viability.***

Context

- There are many sites and areas of significance to Māori in the Greater Christchurch area, reflecting the historic occupation and movement of Māori across the landscape for over a thousand years.
- Recognition of a cultural landscape is important to Ngāi Tahu identity, as it affirms connections to place and in some instances the opportunity for continuing cultural practices.
- Identifying cultural landscapes provides for the protection of Wāhi Tapu and Wāhi Taonga.
- There is the opportunity to integrate te ao Māori into planning and designing the built form of Greater Christchurch, and re-establishing a cultural presence.
- Both Māori and European cultural and historic heritage contribute to the identity of the Greater Christchurch area. It is important these values are recognised and protected through the Spatial Plan for the benefit of current and future generations.

Direction

1.1 ~~Avoid~~ **Protect** urban development over Wāhi Tapu **from urban development**

1.2 Protect, restore and enhance Wāhi Taonga and Ngā Wai

1.3 Protect, recognise, and restore the historic heritage of Greater Christchurch.

Direction

~~1.1 Avoid urban development over~~ **Protect Wāhi Tapu from urban development**

1.2 Protect, restore and enhance Wāhi Taonga and Ngā Wai

1.3 Protect, recognise, and restore the historic heritage of Greater Christchurch

The Greater Christchurch area encompasses a number of sites and areas of significance to Māori (see Map 6). This includes those recognised as Wāhi Tapu, Wāhi Taonga, Ngā Tūranga Tūpuna and Ngā Wai.

The protection of sites and areas of significance to Māori for the benefit of current and future generations is essential to the cultural identity of Greater Christchurch, acknowledging that their protection is a matter for engagement with mana whenua. It is important that the relationship mana whenua has with these sites and areas is able to be maintained and enhanced, which means urban development must be in locations that do not impact on them.

Wāhi Tapu

Wāhi Tapu are sites and places that are culturally and spiritually significant to the history and identity of mana whenua. They include sites such as urupā, pā, maunga tapu, kāinga, tūranga waka and places where taonga have been found. The term is generally applied to places of particular significance due to an element of sacredness or some type of restriction as a result of a specific event or action. Wāhi Tapu sites are to be protected according to tikanga and kawa to ensure the sacred nature of those sites is respected.

Wāhi Taonga

Wāhi Taonga are treasured places that have high intrinsic value and are valued for their capacity to shape and sustain the quality of life, and provide for the needs of present and future generations. Access to these areas is important to Ngāi Tahu identity.

Ngā Tūranga Tūpuna

Ngā Tūranga Tūpuna are broader landscapes within which there are concentrations of a range of culturally significant sites. The maintenance of the integrity of these environments is an important outcome.

Ngā Wai

Ngā Wai encompasses water bodies and their margins, and include ngā awa (rivers), ngā roto (lakes), ngā hāpua (coastal lagoons), ngā repo (wetlands) and ngā puna (springs).

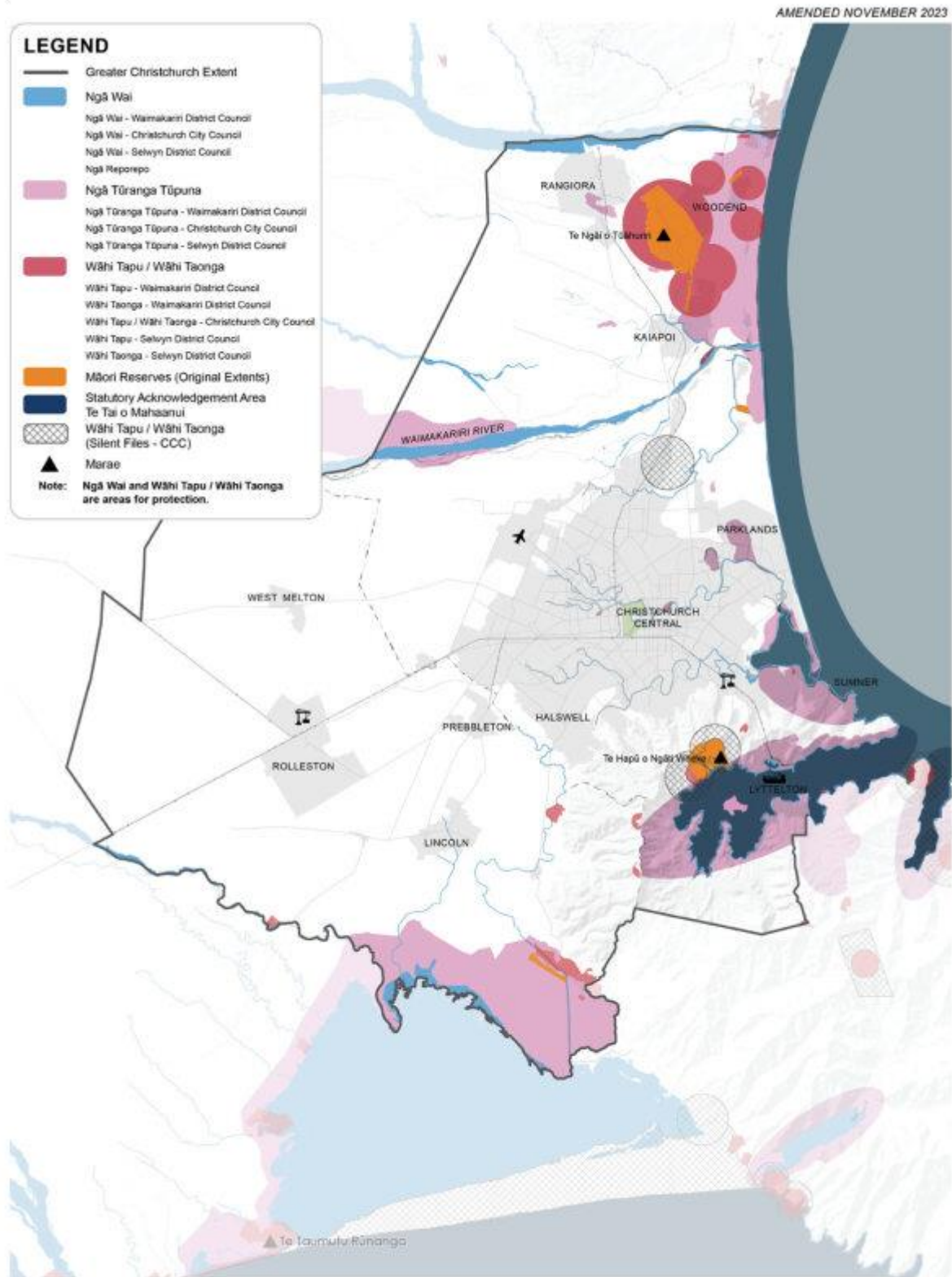
The entire coastline of Te Tai o Mahaanui is recognised as Ngā Wai. Te Ihutai / Avon-Heathcote Estuary, and the Ōtākaro / Avon, Ōpawaho / Heathcote and Pūharakekenui / Styx rivers, and a number of their tributary streams, in Christchurch City are identified as Ngā Wai. Throughout the Selwyn and Waimakariri districts, a variety of rivers are also identified as Ngā Wai, including the Waimakariri and some of its tributaries, the Waikirikiri / Selwyn and Hurutini / Halswell, along with Te Waihora / Lake Ellesmere.

1.3 Protect, recognise, and restore the historic heritage of Greater Christchurch.

Greater Christchurch has many significant heritage sites, areas, and associated values, which should be recognised in urban development and protected from inappropriate activities. In providing this protection there will be tension with the direction for greater intensification and the pressures this may bring on historic heritage sites and areas. The challenge to this will be balancing the protection of historic heritage with providing for greater intensification and a changing urban environment. However, as a matter of national importance under the Resource Management Act 1991, historic heritage values are given greater consideration over intensification.

DRAFT

Map 6: Sites and areas of significance to Māori



Amend Map 6 above as follows:

- a. Include symbols for Lyttelton Port and the inland ports.

Opportunity 2: Reduce and manage risks so that people and communities are resilient to the impact of natural hazards and climate change

There are some areas of Greater Christchurch that are subject to significant risks from natural hazards and the effects of climate change. The Spatial Plan ensures that future development is directed away from these areas, investment in infrastructure reduces exposure and the resilience of communities in these areas is increased by taking action.

Context

- Climate change is increasing the likelihood of more frequent and severe natural hazards, including storms, flooding, coastal inundation and erosion, land instability, heat waves, droughts, high winds, and fires; as well as slower onset effects such as sea level rise.
- Low-lying coastal areas are particularly exposed to natural hazards, such as flooding and tsunamis.
- Climate change is already impacting local ecosystems and communities, and is disproportionately affecting mana whenua and vulnerable communities.
- Essential infrastructure is at risk, with the potential for disruption to power, transport and water supply during an extreme natural hazard event. These impacts could have serious consequences for human health, livelihoods, assets and the liveability of places.
- The decisions made now on how urban areas will grow and change will influence the patterns of exposure and vulnerability to natural hazards in the future.
- Focusing growth away from hazardous locations, investing in infrastructure that reduces exposure and adapting urban areas by incorporating functional elements into the blue-green network can all help to reduce some of the risks.
- In a global context, greenhouse gas emissions on a per capita basis are extremely high in Greater Christchurch. An emissions inventory for Christchurch City for the 2018/19 financial year showed that more than half of its total emissions came from the transport sector. **It is acknowledged that achieving a low carbon future for greater Christchurch will require the provision of reliable renewable energy.**

Direction

- 2.1 Focus and incentivise growth in areas free from significant risks from natural hazards
- 2.2 Strengthen the resilience of communities and ecosystems to climate change and natural hazards

Direction

2.1 Focus and incentivise growth in areas free from significant risks from natural hazards

A number of areas in Greater Christchurch are vulnerable to flooding, particularly in the low-lying eastern areas of Christchurch and areas surrounding Kaiapoi; while coastal areas are vulnerable to sea level rise, coastal inundation and erosion, and tsunamis (see Map 7).

Earthquakes are also a significant risk factor. The related risks of cliff collapse, rockfall and mass movement are constraints on development that particularly affect the hill suburbs of Christchurch.

It is essential that urban development is directed away from areas that are at significant risk from natural hazards **where that risk cannot be reduced to acceptable levels**, to ensure the safety and wellbeing of people, and the protection of buildings, infrastructure and assets. This will also reduce levels of exposure to the effects of climate change.

There are also some areas subject to natural hazards, but where these risks can be **more easily** mitigated by building differently, such as increasing the floor levels of a building or ensuring building foundations meet a higher standard. These areas, **which include parts of the Port Hills and large areas of the floodplains**, are categorised as having negotiable **moderate** constraints (see Map 8).

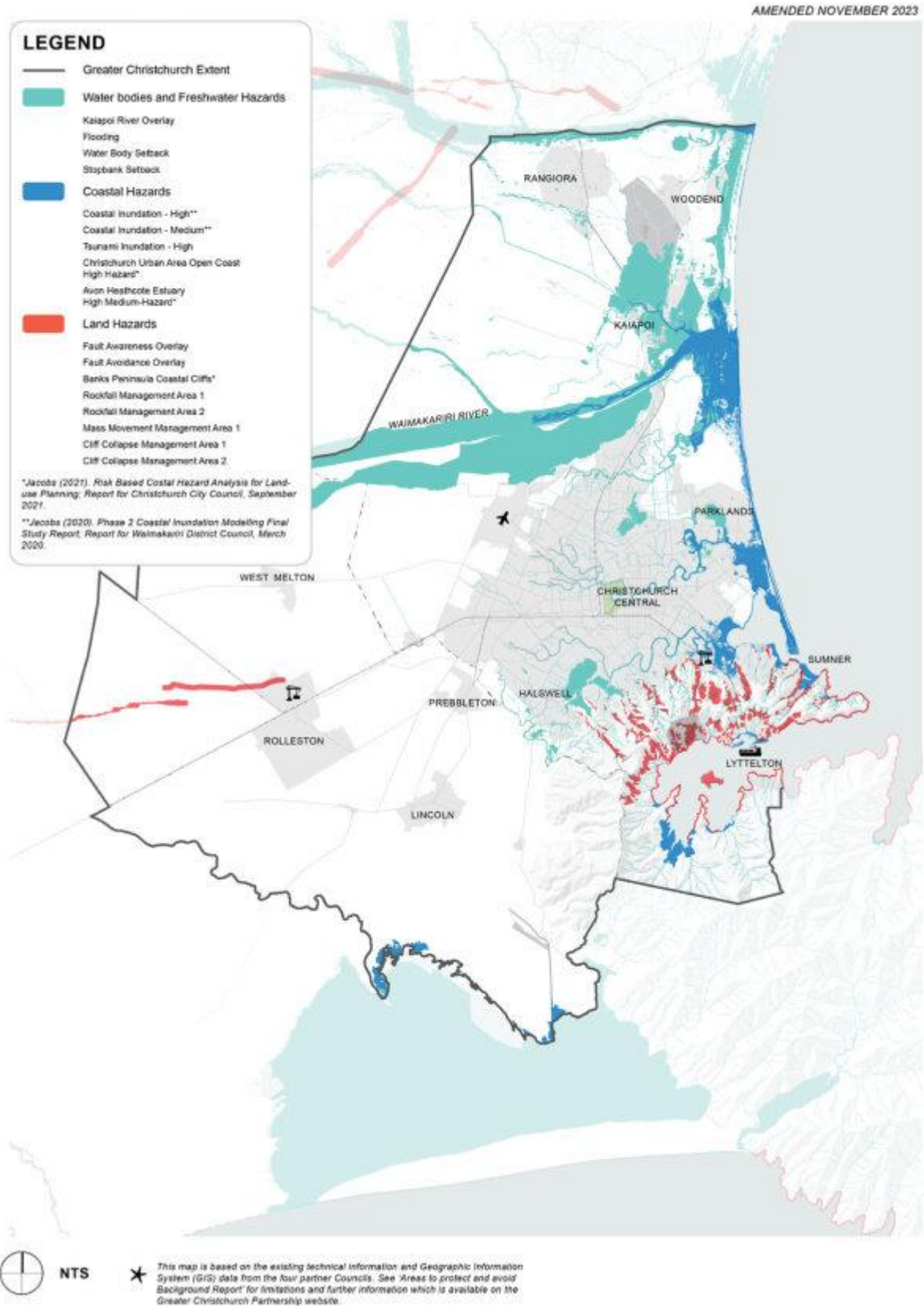
2.2 Strengthen the resilience of communities and ecosystems to climate change and natural hazards

Climate resilience means reducing greenhouse gas emissions, responding to known risks from climate change, and enhancing the capacity of communities and ecosystems to recover and adapt to a changing environment.

Key ways to build resilience to climate change and natural hazards in Greater Christchurch include:

- Reducing transport emissions by supporting more people to live, work, shop, recreate and socialise within close proximity, and to use public transport when they do need to travel, by focusing growth through targeted intensification around centres and along public transport corridors.
- **Recognising interdependencies in the infrastructure sector, especially between telecommunications and electricity, and acknowledging the role they play in responding to, and recovering from, natural hazard events.**
- Focusing growth away from areas likely to be more exposed to natural hazards that will be exacerbated by climate change, such as flooding and coastal erosion, **while acknowledging that strategic infrastructure sometimes needs to operate in areas affected by natural hazards.**
- Protecting and restoring the natural environment to support communities and ecosystems be more resilient to climate change and natural hazards. Opportunities for Greater Christchurch include promoting enhanced coastal and wetland reserves to reduce flood risk, establishing new green spaces to help absorb and treat rainwater, planting trees to shade and cool urban areas, and creating new or enhanced forested areas.

Map 7: Areas subject to natural hazard risks



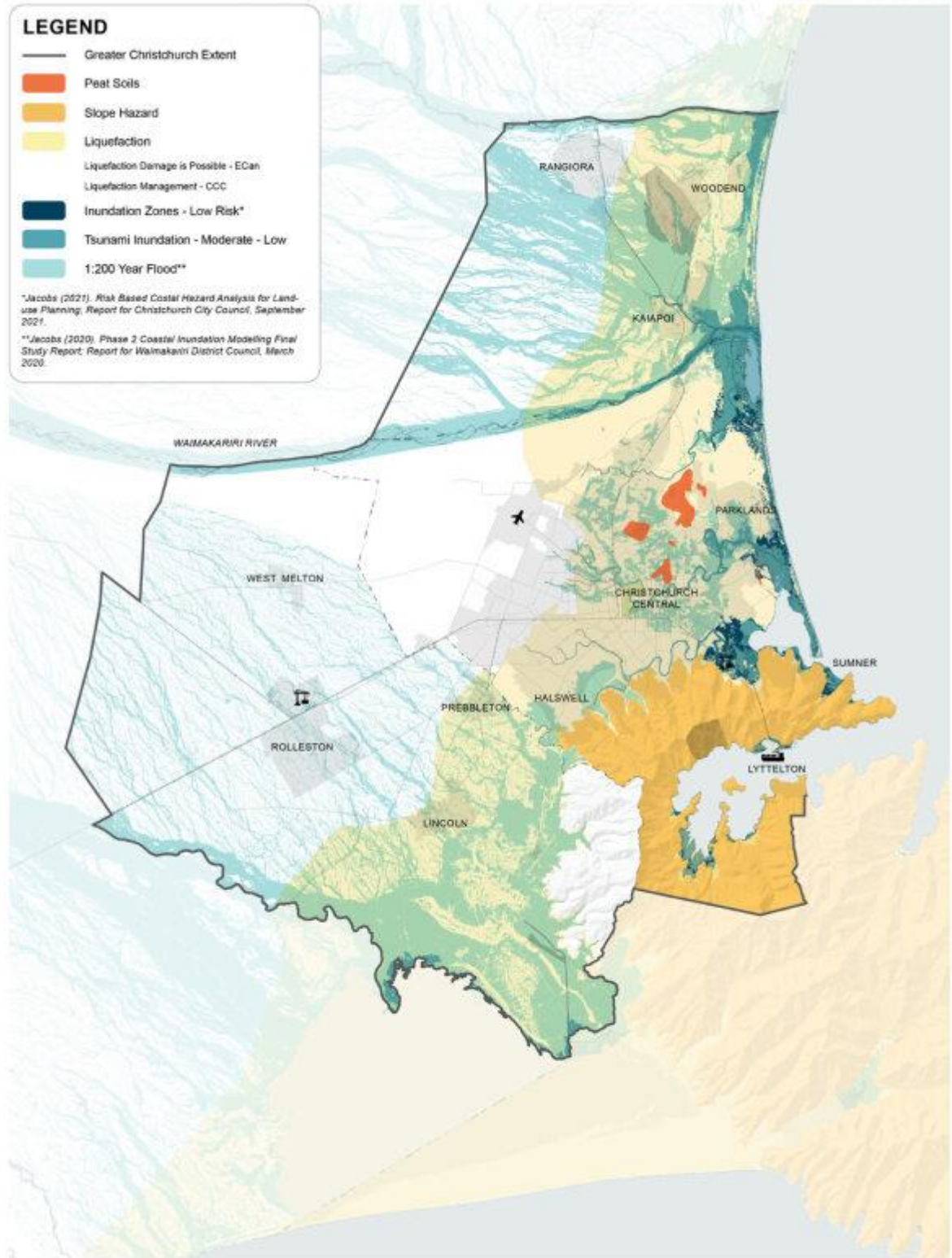
Amend Map 7 above as follows:

- a. PC12 references to be deleted and replaced with reference to Jacobs Report, and reference to be added for Waimakariri Flood technical report.
- b. Tsunami evacuation red layer to be replaced with 3m inundation wave from GNS 2019/2020 Report and the legend amended to remove reference to Tsunami Inundation – Red, and replaced with Tsunami Inundation – High.
- c. Amend the foot note to : This map is based on the existing **technical** information and Geographic Information Systems (GIS) data from the four partner Councils. ~~For some constraints, mapping data is unavailable, incomplete or reliant on emerging policy with legal effect.~~ **See** 'Areas to protect and avoid **Background** Report' for limitations and further information **which is** available on the Greater Christchurch Partnership website.
- d. Include symbols for Lyttelton Port and the inland ports

DRAFT

Map 8: Areas subject to negotiable moderate natural hazard risks

AMENDED NOVEMBER 2023



LEGEND

- Greater Christchurch Extent
- Peat Soils
- Slope Hazard
- Liquefaction
- Liquefaction Damage is Possible - ECan
- Liquefaction Management - CCC
- Inundation Zones - Low Risk*
- Tsunami Inundation - Moderate - Low
- 1,200 Year Flood**

*Jacobs (2021). Risk Based Coastal Hazard Analysis for Land-use Planning. Report for Christchurch City Council, September 2021.

**Jacobs (2020). Phase 2 Coastal Inundation Modeling Final Study Report. Report for Waimakariri District Council, March 2020.



This map is based on the existing technical information and Geographic Information System (GIS) data from the four partner Councils. See 'Areas to protect and avoid' Background Report' for limitations and further information which is available on the Greater Christchurch Partnership website.

Amend Map 8 above as follows:

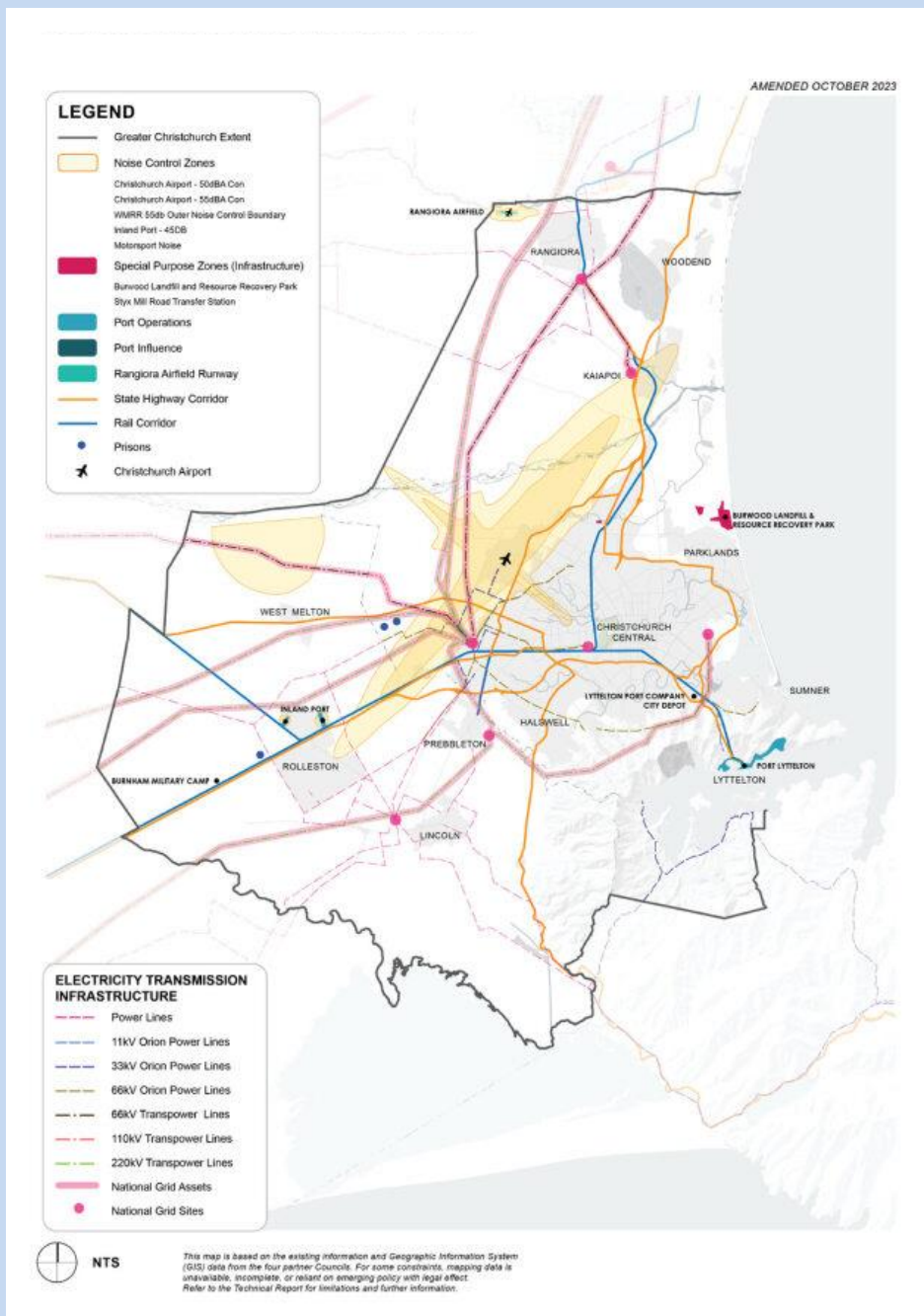
- a. PC12 references to be deleted and replaced with reference to Jacobs Report, and reference to be added for Waimakariri Flood technical report.
- b. Tsunami evacuation orange layer to be replaced with 5m wave inundation wave from GNS 2019/2020 Report; and the legend amended to remove reference to Tsunami Evacuation Zone (orange) and replaced with Tsunami Inundation – Moderate-Low.
- c. Amend the foot note to : This map is based on the existing **technical** information and Geographic Information Systems (GIS) data from the four partner Councils. ~~For some constraints, mapping data is unavailable, incomplete or reliant on emerging policy with legal effect.~~ **See** 'Areas to protect and avoid **Background** Report' for limitations and further information **which is** available on the Greater Christchurch Partnership website.
- d. Include symbols for Lyttelton Port and the inland ports

DRAFT

Protecting strategic infrastructure

Urban development should be **avoided carefully managed** around strategic infrastructure to ensure the safety and wellbeing of residents, and to safeguard the effective operation, maintenance and potential for upgrades of this infrastructure. Key strategic infrastructure in Greater Christchurch includes Christchurch Airport, the Port of Lyttelton, the inland ports at Rolleston and Woolston, state highway and rail corridors, **and the National Grid** and the electricity transmission **and distribution** network (see Map 9).

Map 9: Key sStrategic infrastructure



The noise contours relating to Christchurch International Airport as shown on Map 9 represent the contours operative in the Canterbury Regional Policy Statement 2013. As part of the review of the Canterbury Regional Policy Statement, an update of the airport noise contours was completed by Christchurch International Airport Limited and independently peer reviewed by a panel of experts appointed by the Regional Council. In June 2023 a final set of remodelled air noise contours was made publicly available in a report published by Christchurch International Airport Limited. The updated noise contours will be a key input to the review of the Regional Policy Statement, and this is the process by which changes to the spatial extent of the operative contours and the associated policy framework will be considered.

Amend the 'Protecting strategic infrastructure' blue box and Map 9 to sit after Map 5

Amend Map 9 as follows:

- a. correctly show the National Grid; and amendments to the legend annotation and symbols to differentiate between the National Grid assets and electricity distribution network assets
- b. Show locations of prisons
- c. Show the location of the LPC City Depot inland port
- d. Show location of military bases
- e. Remove Woodford Glen Speedway and Ruapuna Raceway
- f. **Include the airport symbol in the legend**

Opportunity 3: Protect, restore and enhance the natural environment, with particular focus on te ao Māori, the enhancement of biodiversity, the connectivity between natural areas and accessibility for people

A healthy natural environment is intrinsically linked with the wellbeing of people and places. The Spatial Plan recognises the importance of the natural environment as the foundation for the future of Greater Christchurch, particularly in the context of climate change and the urgent need to strengthen climate resilience. It commits to working with nature, not taking it over, when looking to the future.

Context

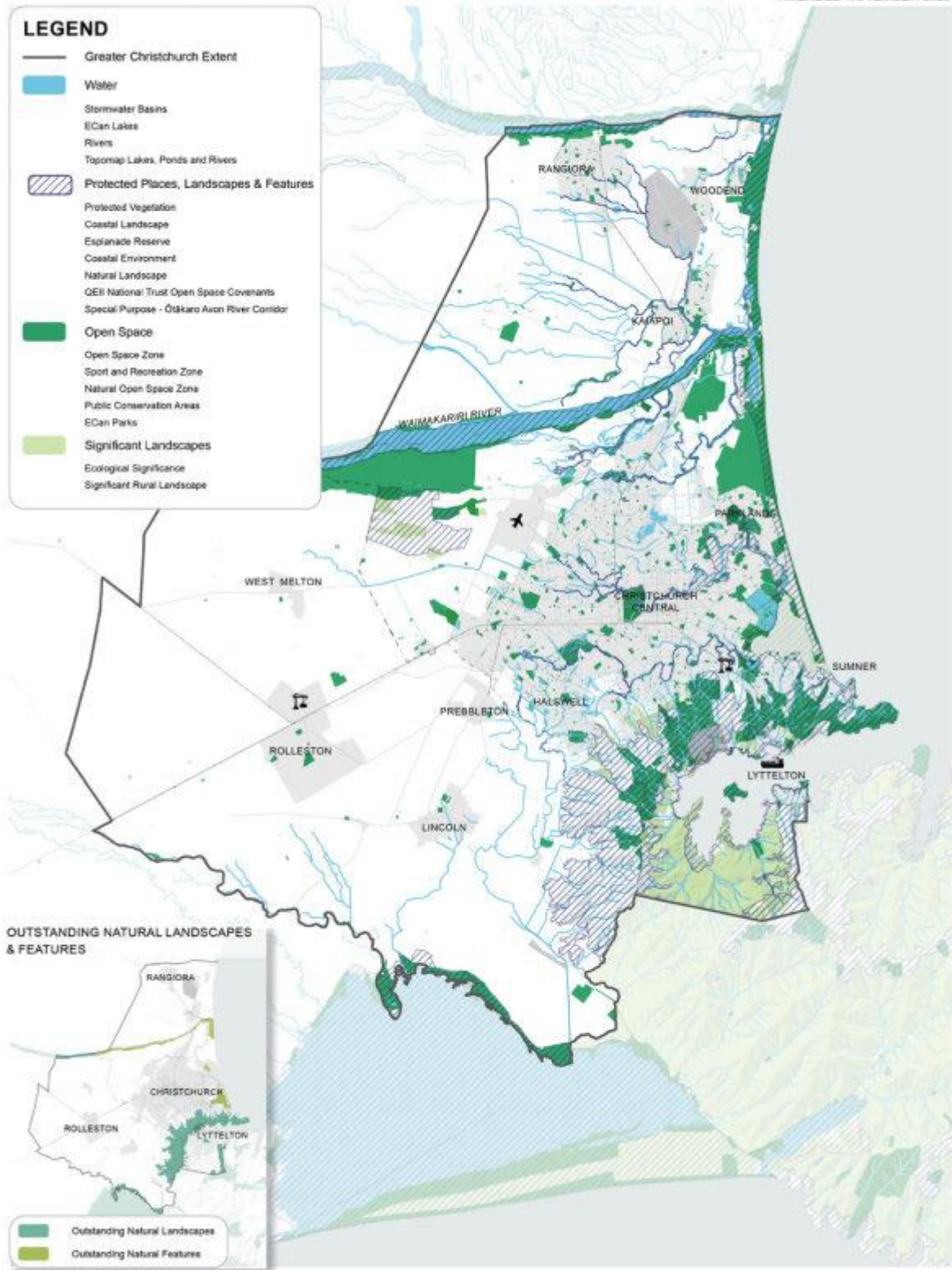
- The state of water bodies continues to degrade, with most having water quality issues and being in a poor state of cultural health. Groundwater that supplies Greater Christchurch's drinking water is at risk from changes to land use, increasing demands for water and the effects of climate change.
- There is currently good access to green spaces, although further planning and investment into parks and open spaces will be needed as the population grows.
- The tree canopy has declined over time, which has reduced habitats for wildlife, the amenity of urban environments, community wellbeing and climate resilience.
- Reductions in the extent and quality of the environment have had a detrimental effect on mana whenua and their relationship with water and natural resources.
- Highly productive soils have been lost to urban development and land fragmentation.
- Air quality has improved overall over the last decade, albeit some areas and communities still experience poor air quality.
- Te ao Māori provides a holistic and integrated approach to using, managing and protecting natural resources by acknowledging the inter-connectedness of all elements of the natural and physical world.

Direction

- 3.1 ~~Avoid development in~~ **Protect** areas with significant natural values
- 3.2 Prioritise the health and wellbeing of water bodies
- 3.3 Enhance and expand the network of green spaces
- 3.4 Protect highly productive land for food production
- 3.5 Explore the opportunity of a green belt around urban areas

Map 10: Environmental areas and features

AMENDED NOVEMBER 2023



Amend Map 10 as follows:

- a. show the sea / coastal water in blue.
- b. Include symbols for Lyttelton Port and the inland ports
- c. Clearly show the ONL and ONF areas from the other 'Protected Places, Landscapes and Features' layers

The Greater Christchurch area is defined by a unique network of water bodies, including braided rivers with alpine origins, and spring-fed rivers and streams that flow through the urban environment and estuaries before reaching the coast. Its key blue elements include the Waimakariri, Ōtākaro / Avon and Ōpāwaho / Heathcote rivers, and Te Ihutai / Avon-Heathcote Estuary. The north-eastern shores of Te Waihora / Lake Ellesmere are also within the defined area of Greater Christchurch.

Key green elements in the Greater Christchurch area include the Ashley Rakahuri Regional Park, Waimakariri River Regional Park, Waitākiri / Bottle Lake Forest Park, Tūhaitara Coastal Park, the coastal environment, the Port Hills, parts of Te Pātaka a Rākaihautū / Banks Peninsula, local parks and open spaces, and the larger green spaces found in Christchurch – namely Hagley Park and the Ōtākaro Avon River Corridor. The dry grasslands of the Canterbury Plains also connect the city region to the wider Waitaha / Canterbury region.

Direction

3.1 Avoid development in **Protect** areas with significant natural values

Te ao Māori acknowledges the interconnectedness of people and te taiao – the environment. Based on this Māori world view, kaitiakitanga is a way of managing the environment that recognises that people are an integral part of the natural world, not separate from it; and that there is an intergenerational duty to **protect**, restore and enhance the mauri (life force) of water, land and ecosystems.

Greater Christchurch has many outstanding environmental areas, features and landscapes (see Map 10). Urban development must be focused away from areas with significant natural values and areas of cultural significance that include Wāhi Tapu and Wāhi Taonga. It is important that any possible encroachment of development on these areas is avoided, or involves early engagement and agreement with mana whenua.

3.2 Prioritise the health and wellbeing of water bodies

Water is a taonga that is culturally significant to Māori and essential to the wellbeing of all communities. Greater Christchurch has an integrated network of rivers, streams, springs, groundwater and aquifers, linked to estuaries and wetlands in the coastal environment. Restoring the health and wellbeing of water bodies, **including wetlands**, is a priority for the city region.

Taking an integrated, catchment-based approach will support a higher quality water environment in Greater Christchurch. Examples of how this could be achieved include supporting waterway and wetland restoration and enhancement projects, setting extensive development setbacks from waterways, day-lighting urban waterways, and incorporating water sensitive urban design. Buffering water bodies with a riparian zone will also improve water quality and biodiversity, protect banks from erosion, alleviate the impacts of flooding, and support other amenity and recreational values.

The groundwater protection zone in Greater Christchurch must also be protected (see Map 11). This area covers the aquifers that provide the city region with its drinking water, which are vulnerable to contamination.

3.3 Enhance and expand the network of green spaces

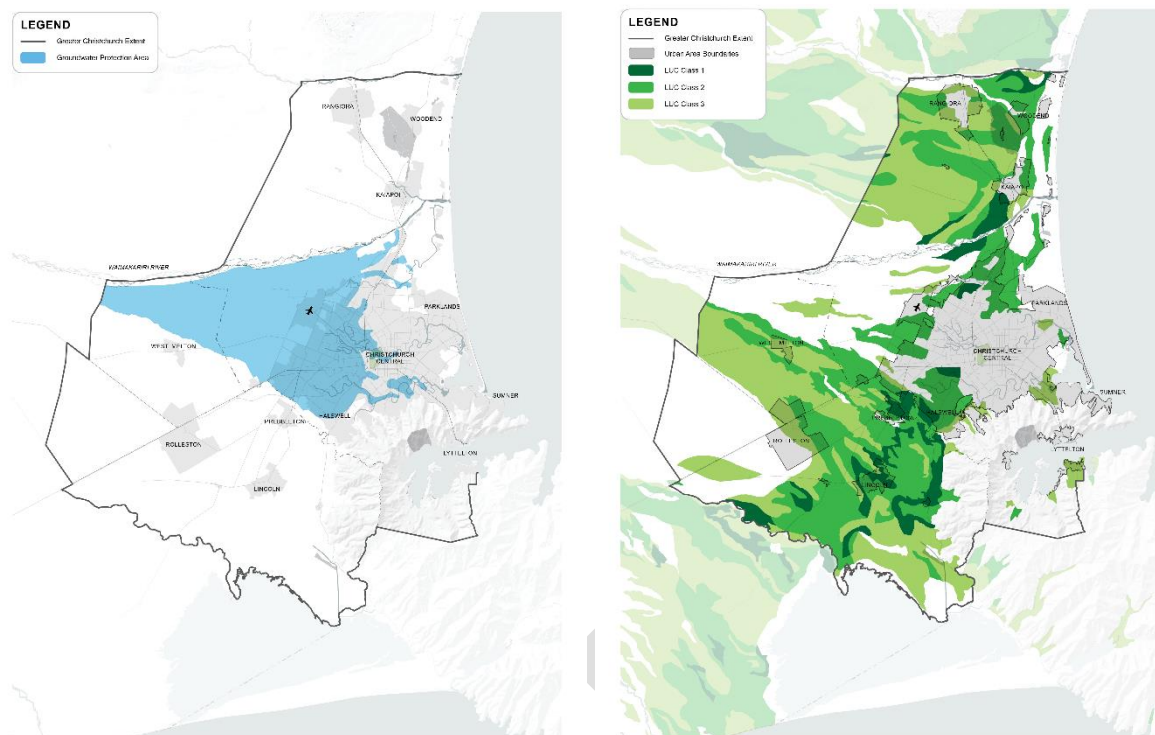
Indigenous biodiversity is important to the environment, culture, society and economy of Greater Christchurch. For Māori, the connection with nature is one of whakapapa.

An enhanced and expanded network of green spaces will improve biodiversity, support access and connectivity, and promote active travel. The vision is that every centre and town is connected to another via a green corridor. Opportunities to improve green connections include creating new green spaces; planting along waterways, streets and major transport routes; growing urban forests; and integrating public green spaces into major development projects. Creating stronger links to the Port Hills and Te Pātaka a Rākaihautū / Banks Peninsula is a particular opportunity to support increased biodiversity.

Improving the quality of the environment in **existing and proposed** higher density areas is critical. This can be achieved by designing and integrating vegetation (particularly trees) and indigenous biodiversity into these areas through enhanced streetscapes, parks and other public spaces, and with green spaces incorporated into private developments.

It is important that green spaces within our urban environments can be enjoyed by people of all ages and abilities, including through inclusive design and the application of universal design standards.

Map 11: Groundwater protection zone / Map 12: Highly productive soils Land Use Capability Class 1-3 soils



3.4 Protect highly productive land for food production

Land that is particularly good for food production is a scarce and finite resource that has been lost as a result of urban expansion and land fragmentation. The highly productive soils found in parts of Greater Christchurch are a valuable resource (see Map 12).

The National Policy Statement for Highly Productive Land requires highly productive land to be protected from urban development, with some exceptions. Focusing urban development within the existing urban area – growing ‘up’ rather than ‘out’ – will help protect the best soils for agriculture. Where development does need to occur outside the existing urban area, this should avoid highly productive land where possible.

Implementation of the National Policy Statement for Highly Productive Land is subject to a regional planning process. The mapping of highly productive land, as per the definition in the National Policy Statement, has not yet been notified by the Canterbury Regional Council. The interim definition of highly productive land **in the current National Policy Statement (September 2022)**, is land that is Land Use Capability Class 1, 2, or 3 (with some exceptions relating to identified growth areas). For the purposes of the Spatial Plan, these Land Use Capability Classes have been shown in Map 12, noting that exceptions do apply. **Map 12 is not determinative of the identification of highly productive land for inclusion, by way of maps, in the Canterbury Regional Policy Statement as required by the National Policy Statement for Highly Productive Land.**

3.5 Explore the opportunity of a green belt around urban areas

A green belt is a planning tool used to maintain areas of green space around urban areas, often acting as a buffer between urban and rural areas. A green belt around Greater Christchurch’s urban areas could help limit urban expansion; protect food producing land and green spaces for future generations; provide space for urban forests, wetlands and ecological restoration areas; increase resilience to the effects of climate change; and support recreational activities.

The concept of a green belt in Greater Christchurch needs to be explored in more detail and **this** will be undertaken as part of the development of a blue-green network strategy.

DRAFT

Part 2 – An urban form for people and business

Opportunity 4: Enable diverse, **quality** and affordable housing in locations that support thriving neighbourhoods that provide for people’s day-to-day needs

The homes and communities that people live in provide the foundations for their wellbeing. Greater Christchurch’s population is growing and changing, which will impact how and where people live. The Spatial Plan focuses on providing greater housing choice to meet the diverse needs of the community, including the need for more affordable homes; as well as enabling more people to live in places that are well-connected to employment, education, social and cultural opportunities.

Context

- Greater Christchurch has maintained a good supply of housing that is relatively affordable for middle to high income households, especially compared to other parts of the country.
- Delivering enough affordable housing continues to be a significant challenge, with an estimated 35,000 households in Greater Christchurch defined as being under housing stress in 2021.
- The current mix of housing types will not be suitable to meet needs in the future, particularly with the increase in one-person households and need for more multi-generational housing.
- The prosperity and wellbeing of Māori have been impacted by legislation, planning provisions and urban development strategies that have failed to recognise and prioritise the development of Māori Reserves or recognise the housing needs of Māori within urban areas. Housing options that meet the needs of Māori whānau are very limited in Greater Christchurch’s urban areas.
- The level of accessibility to employment, services, green spaces and public transport varies across different parts of Greater Christchurch.
- The National Policy Statement on Urban Development and the Resource Management (Enabling Housing Supply and Other Matters) Amendment Act have removed barriers to development to allow growth ‘up’ and ‘out’ in locations with good access to existing services, infrastructure and public transport.

Direction

- 4.1 Enable the prosperous development of kāinga nohoanga on Māori Reserve Land, supported by infrastructure and improved accessibility to transport networks and services; along with the development of kāinga nohoanga within urban areas
- 4.2 Ensure **at least** sufficient development capacity is provided or planned for to meet demand
- 4.3 Focus and incentivise intensification of housing to areas that support the desired pattern of growth
- 4.4 Provide housing choice and affordability
- 4.5 Deliver thriving neighbourhoods with quality developments, **quality housing** and supporting community infrastructure

Direction

4.1 Enable the prosperous development of kāinga nohoanga on Māori Reserve Land, supported by infrastructure and improved accessibility to transport networks and services; along with the development of kāinga nohoanga within urban areas

As outlined in *The prosperous development of kāinga nohoanga* section, legislation and a failure of strategic planning have prevented the development of Māori Reserves for subdivision, housing, and social and educational infrastructure, educational facilities, as well as the development of prosperous economic activities. This has impacted the prosperity and wellbeing of mana whenua.

Many Māori live within Greater Christchurch's urban areas where existing zonings do not contemplate or appropriately provide for kāinga nohoanga as a housing outcome. Consequently, the cultural needs of Māori have been overlooked.

A particular issue in supporting kāinga nohoanga is to ensure that infrastructure is provided that meets the needs of mana whenua for future development of kāinga nohoanga on Māori Land, with a specific focus on MR873 at Tuahiwi. Whilst policy and plan changes have occurred to enable kāinga nohoanga, this has not been supported with investment in infrastructure.

Within urban areas, it is assumed that the development of kāinga nohoanga will be able to be accommodated within the capacity of existing infrastructure or planned infrastructure upgrades.

Development of kāinga nohoanga is to be supported by partners as part of the commitment to give effect to mana whenua expectations and priorities. This will require a partnership with mana whenua to identify and respond to the specific infrastructure needs for Māori Reserve Land and within urban areas to ensure that there is sufficient capacity in, and feasible access to, local networks to enable this.

Further work between mana whenua and councils is needed to remove residual barriers in the planning framework, including the rezoning of all Māori Reserves and partnership in the provision of infrastructure to enable the development of Kāinga Nohoanga on Māori Land and within urban areas.

Key commitments and actions required to deliver this direction

- Partner with mana whenua to identify and respond to the specific infrastructure needs for Māori Reserve Land to ensure that there is sufficient capacity in, and feasible access to, local networks, to enable this.
- Partners to invest and provide infrastructure to support the development of MR873 and ensure mana whenua are active partners in decision making for these investments.
- Support mana whenua with upgraded infrastructure where needed in urban areas to enable kāinga nohoanga.
- Ensure that any future urban form for Greater Christchurch does not preclude or prevent the growth and development of Māori Reserve Land as settlements to the fullest extent possible. This includes ensuring Māori Land is not used or taken for public infrastructure required to service development on adjoining or proximate land.
- Ensure policy does not impede the ability to establish urban kāinga nohoanga.
- Enable and support the implementation of the Kāinga Nohoanga Strategy, which will set the expectations and implementation requirements to enable and support kāinga nohoanga.

- Initiate a process to rezone MR892 and MR959.

4.2 Ensure at least sufficient development capacity is provided or planned for to meet demand

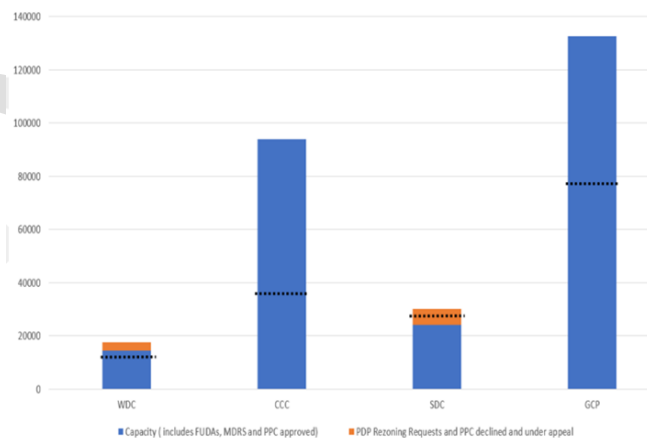
Meeting the projected demand for housing over the next 30 years is not a major issue for Greater Christchurch. This is particularly with additional greenfield areas being recently rezoned through private plan changes, and further intensification enabled across the city region as required by the National Policy Statement on Urban Development and Resource Management (Enabling Housing Supply and Other Matters) Amendment Act. In addition to these recent rezonings, greenfield areas are also being considered through rezoning submissions on the Selwyn and Waimakariri District Plan Review processes – the outcomes of which are yet to be determined.

Table 2: Sufficiency of housing development capacity to meet projected demand (2022 – 2052)

	Feasible capacity		Demand with margin		Surplus / Shortfall	
	Medium term (0 – 10 years)	Long term (0 – 30 years)	Medium term (0 – 10 years)	Long term (0 – 30 years)	Medium term (0 – 10 years)	Long term (0 – 30 years)
Waimakariri	5,950	14,450	5,600	13,250	+350	+1,200
Christchurch	94,000	94,000	14,150	37,500	+79,850	+56,500
Selwyn	11,550	24,100	10,000	27,350	+1,550	-3,250
<i>Total</i>	111,500	132,550	29,750	78,100	+81,750	+54,450

Based on the assumption that housing demand remains constant over time, a 60-year housing bottom line could translate into a requirement to accommodate an additional 160,000 households in Greater Christchurch – the equivalent to almost one million people living in the city region. This longer term growth could still be largely accommodated by the current housing development capacity in the city region as a whole as these figures also do not take account of the potential capacity from higher densities, which during the long term is likely to become more feasible and common in the market.

Figure 9: Sufficiency of housing development capacity to meet projected demand (2022 - 2052)



The response to long term shortfalls will be through exploring the feasibility of intensification, especially around centres and public transport routes, and increasing minimum densities for new greenfield areas. The broad locations for residential growth are shown in *Map 14 under Opportunity 5*. The Priority Development Areas will also be a significant tool to incentivise redevelopment and higher density housing (see the *A collective focus on unlocking the potential of Priority Areas* section). Further to this, **broad** locations for **residential** development to provide additional capacity should align with the direction in the Spatial Plan and desired pattern of growth. **Identifying broad locations for residential development, should be guided by the Spatial Strategy, including the six opportunities, directions and the overarching directions that shape the desired pattern of growth. Broad locations at a minimum:**

1. Adjoins to or are within a Significant Urban Centre, Major Town or a Locally Important Urban Centre in Greater Christchurch
2. Are accessible to either MRT, Core Public Transport Routes or New / Enhanced Public Transport Routes
3. Protect, restore and enhance the natural environment, historic heritage and sites and areas of significance to Māori
4. Are free from significant risks arising from natural hazards and the effects of climate change

4.3 Focus and incentivise intensification of housing to areas that support the desired pattern of growth

The focus of the Spatial Plan is to encourage greater intensification and higher densities around centres and public transport routes. The benefits of intensification in line with this desired pattern of growth include:

- More people living in closer proximity to services and employment
- A competitive public transport system to encourage mode shift
- Less reliance on private vehicle use
- A reduction in greenhouse gas emissions
- Efficient and effective use of existing infrastructure
- More affordable and diverse housing choices
- Less need for urban expansion onto highly productive land.

Greater intensification (medium and high density) is also being enabled as directed under the Resource Management Act (Intensification Instruments) and the National Policy Statement on Urban Development. This national direction enables greater intensification to occur across large parts of the urban area that may not necessarily be in close proximity to centres and public transport routes. The approach to focus intensification around centres and public transport routes will need to rely less on traditional planning tools (e.g. zoning) and look more at incentivisation, partnerships and investment. **A broad range of statutory and non-statutory tools will be relied upon for improving the feasibility of intensification to support the desired pattern of growth.**

A key approach to targeting intensification in the preferred locations is to identify Priority Development Areas, which are areas that the partnership will take a coordinated effort at a given time. They provide a mechanism for coordinated and aligned action across multiple agencies; to inform, prioritise and unlock investment, and drive collective accountability.

4.4 Provide housing choice and affordability

Greater intensification around centres and along public transport routes will help provide a range of dwelling types to meet the changing demand profile in Greater Christchurch, particularly from an aging population. This includes providing for the projected higher demand for smaller, more affordable units.

This will mean new housing will increasingly move towards medium and higher density housing types, such as townhouses, terraced housing and apartments. This will help to increase the variety of housing, including more affordable options. However, to do this across a spectrum of housing choice and demand, the intensification focus needs to be combined with continuing to provide for **diverse forms of housing and** some greenfield areas in appropriate locations.

The focus on targeted intensification will support an urban form that helps address the strategic opportunities and challenges facing the city region, and to help address housing affordability for low income households.

DRAFT

Figure 10: Population growth by age group in Greater Christchurch

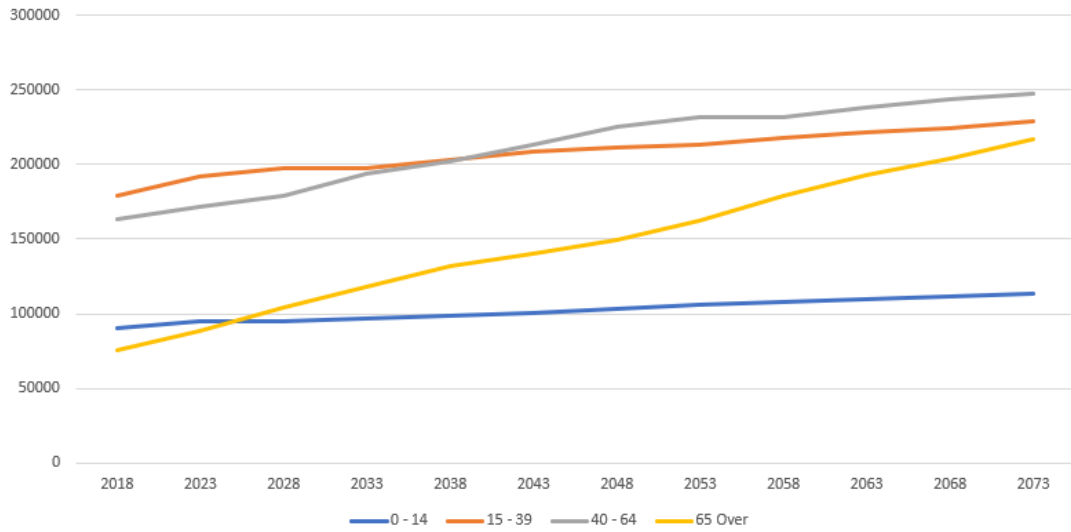
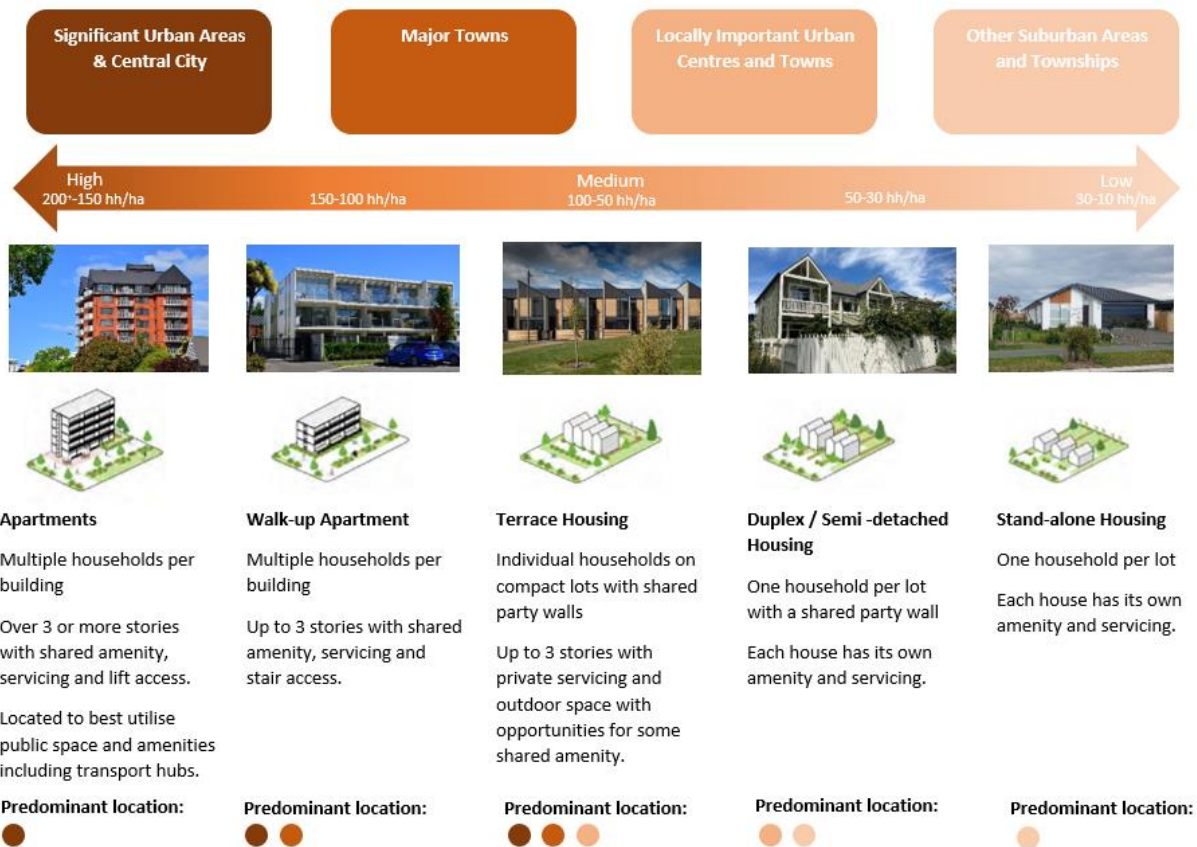


Figure 11: Housing typologies by density



Social and affordable housing needs

In comparison to other major urban centres in Aotearoa New Zealand, housing in Greater Christchurch is relatively affordable. However, the provision of social and affordable housing will become an increasingly critical issue.

Enabling higher density housing developments at different price points will be vital to meeting the projected increase in demand for smaller, more affordable dwellings. The cost of housing, both home ownership and renting, will continue to represent a significant component of household expenditure. New households will have different housing preferences and affordability constraints, but to better align the total housing stock across Greater Christchurch with the overall household composition, new development would need to favour smaller and more affordable housing types.

Smaller and multi-unit dwellings that take advantage of more efficient building construction techniques, and adopt new home ownership and rental models, can aid the provision of more affordable homes. Housing should meet the needs of the population at all stages of life.

Housing need in Greater Christchurch, **including social and affordable housing**, will be further addressed through the development of a joint ~~social and affordable~~ housing action plan.

Greenfield

The creation of 'greenfield' areas will continue to be part of how we accommodate more people so that we can provide a range of lifestyle choices that our communities value. The focus of our spatial plan and greenfield development, is to encourage positive change in our urban form and function, recognising that while housing capacity needs to be provided, this must achieve and not undermine other directions and principles. To achieve this, successful future greenfield development needs to:

1. Be well connected with employment, services and leisure through public and active transport networks
2. Be integrated with existing urban areas
3. Meet a need identified by the latest Housing and Business Development Capacity Assessment
4. Be at the right scale, density and location to minimise impact on highly productive land and existing permitted or consented primary production activities.

Further additional greenfield development may be required for the longer term and to provide for a population towards one million. Additional greenfield will be assessed through other statutory processes.

While there has been a trend towards increasing greenfield density over the last few years, the rate of change will need to increase to support the overall outcomes of the Spatial Plan. A technical report prepared to evaluate greenfield density uptake in Greater Christchurch included a density outcomes analysis of case study areas, as well as a national and international literature review to assess the implications of increasing residential density. The analysis found that there is a positive relationship between increases in density, more diverse housing typologies and the utilisation of more sustainable transport modes. The analysis found that the benefits of residential density increase incrementally. However, there are 'tipping points' of 25 to 30 households per hectare where residential density can deliver greater benefits.

Specific Forms and Alternative Approaches to Housing

Specific forms of housing and alternative approaches to housing are part of housing choice. They can provide for a range of preferred lifestyle options, respond to deficiencies or particular demand in the housing market, target those with the greatest housing need or deliver housing through innovative and

novel approaches. They span the housing continuum from social housing through to private housing in the open market. They can offer greater diversity of housing typologies, tenures and price points.

Consideration of how specific forms of housing and alternative approaches to delivering housing can support greater housing choice in Greater Christchurch will be further addressed through the development of a Joint Housing Action Plan.

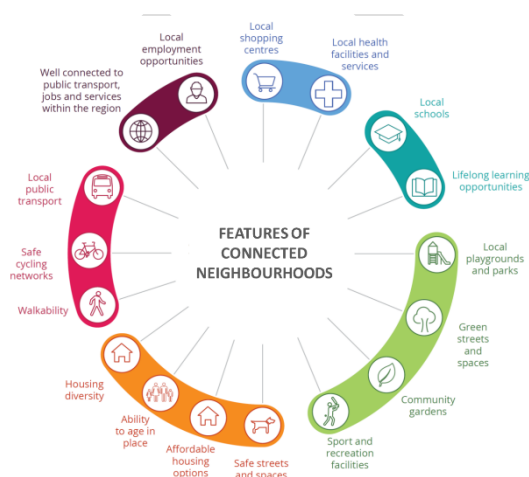
4.5 Deliver thriving neighbourhoods with quality developments, quality housing and supporting community infrastructure

Thriving neighbourhoods enable people and communities to meet their day-to-day needs, strengthen quality of life, and increase community connection and resilience. They are neighbourhoods that **are well connected**; enable safe and equitable access for all; have high quality and safe open spaces, green spaces and public realm; and provide **a diverse range of housing choice including** for social and affordable housing

Vibrant communities with access to services **Features of Thriving Neighbourhoods**

With good urban design, neighbourhoods and their centres can include communal spaces that are liveable, walkable, safe and attractive, and have good connectivity and accessibility. A network of vibrant and diverse urban and town centres that incorporates mixed-use and transport orientated development helps to improve access and add to people’s wellbeing.

Figure 12: Features of connected neighbourhoods
Features of Thriving Neighbourhoods.



Amend Figure 12 as follows:

- a. Change the internal title in Figure 12 to read ‘Features of Thriving Neighbourhoods’

Community facilities and open, green and public spaces

Community facilities contribute to strong, healthy and vibrant communities by providing spaces where residents can connect, socialise, learn and participate in a wide range of social, cultural, **religious**, art and recreational activities. There has been extensive rebuilding and repairing of community facilities within Greater Christchurch, resulting overall in a modern network of well-designed buildings able to cater for optimal usage and meet residents’ expectations. Following the completion of key facilities, such as the Parakiore Recreation and Sport Centre and Te Kaha Multi-Use Arena, the city region will be well serviced to support a broad range of community, tourist, recreational and sporting events.

Open, green and public spaces are areas for people to gather, meet, play and talk. These are places that can be used for cultural purposes, for social events or to engage in recreational activities with one another. There is an extensive network of open spaces across Greater Christchurch; ranging from regional parks, to local area and neighbourhood parks, to sports fields. As the population grows and urban areas densify, it will be

important to ensure that open space provision is meeting the required levels of service for communities. Local area planning will be critical to guide future investment in open spaces, and importantly the prioritisation of new developments and upgrades to ensure equitable provision across the city region.

It is important to have neighbourhood meeting places, and community facilities and services, that support the needs of individuals and whānau. Such facilities and services also need to keep up with growth and adapt to the particular needs of each community.

Quality Developments and Quality Housing

Quality developments and quality housing are at the heart of thriving neighbourhoods, enriching the lives and wellbeing of our communities. Quality developments support neighbourhoods to develop and change over time in response to the diverse and changing needs of people, communities, and future generations.

Quality housing meets the diverse needs of the community over their lifetime and ensures that individuals, whānau and communities can live well so our neighbourhoods thrive for all. The Joint Housing Action Plan will consider quality housing in the context of Greater Christchurch.

Community facilities and open, green and public spaces Sense of connection and safety

How neighbourhoods, towns and cities are planned and develop impacts on the health and wellbeing of people and communities. Connected neighbourhoods and communities are safer, more resilient, and contribute to increased health and wellbeing. A sense of connection and safety also contributes to the conditions in which people live and work, their access to facilities and services, their lifestyles, and their ability to develop strong social networks.

Opportunity 5: Provide space for businesses and the economy to prosper in a low carbon future

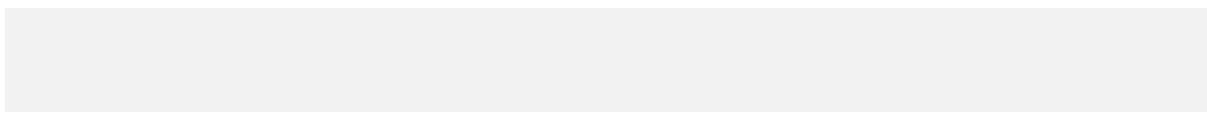
Greater Christchurch has a strong and diverse economy. Leveraging the economic assets and strengths of the city region is important for supporting business growth and increasing quality employment opportunities for the growing population. The Spatial Plan provides for the needs of businesses through a network of centres that are well connected and serviced by infrastructure.

Context

- Greater Christchurch is the principal economic, services and logistics centre for Te Waipounamu / South Island. The goods produced in Waitaha / Canterbury for export are primarily distributed via the Port of Lyttelton, Christchurch Airport, and the inland ports at Rolleston and Woolston.
- Hubs of tertiary and research institutions are found in Christchurch's Central City, including the Ara Institute of Canterbury, the tertiary teaching hospital and the health precinct; and at the University of Canterbury campus in Riccarton, and the Lincoln University and **various research campuses and farms in and near** Lincoln.
- Six of the seven Crown Research Institutes in Aotearoa New Zealand are in Greater Christchurch.
- Employment in the Central City remains below pre-earthquake levels. Even prior to the earthquakes, the Central City was underperforming economically.
- Significant investment after the earthquakes in modern and resilient infrastructure, civic assets, and urban redevelopment, particularly in the Central City, has provided the capacity to cater for much higher levels of economic and population growth.
- The changing nature of business in the context of climate and technological changes will impact where businesses choose to locate and what they require from the urban environment.
- **Greater Christchurch contains a number and range of tertiary and research institutions that are of strategic importance from a local and national perspective. Their retention, protection and continued operation is of regional and national economic importance.**

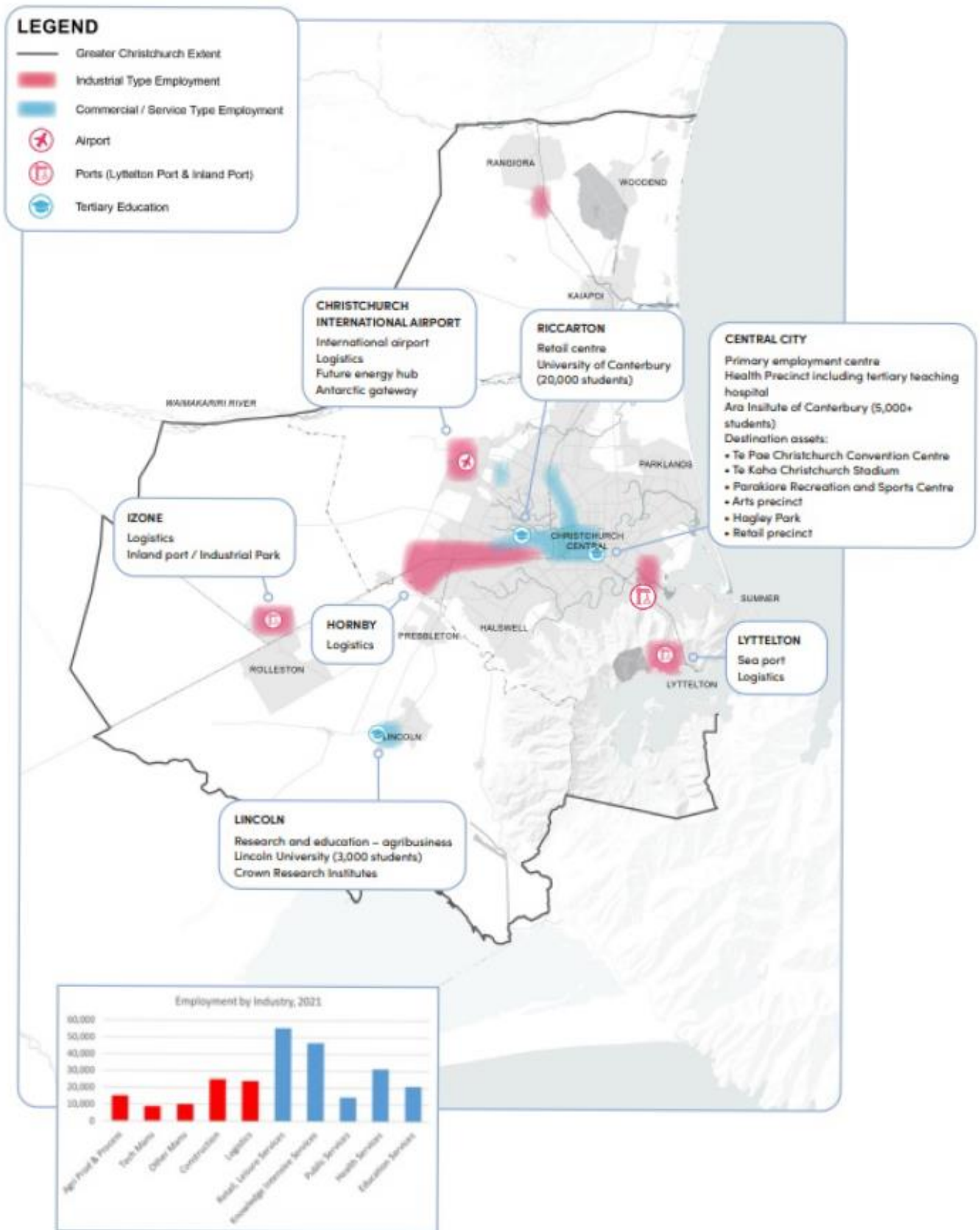
Direction

- 5.1 **At least** sufficient land is provided for commercial and industrial uses well integrated with transport links and the centres network.
- 5.2 A well connected centres network that strengthens Greater Christchurch's economic competitiveness and performance, leverages economic assets, and provides people with easy access to employment and services.
- 5.3 Provision of strategic infrastructure that is resilient, efficient, **integrated** and meets the needs of a modern society and economy.
- 5.4 **Urban growth occurs in locations that do not compromise the ability of primary production activities to expand or change, including adapting to a lower emissions economy.**
- 5.5 **Urban Growth occurs in locations and patterns that protects strategic regionally and nationally important tertiary institutes.**



DRAFT

Map 13: Key employment areas and economic assets



Amend Map 13 as follows:

- a. show the LPC City Depot inland port

DRAFT

Direction

5.1 *At least sufficient land is provided for commercial and industrial uses well integrated with transport links and the centres network*

There are two types of business land:

- Commercial land – for offices, shops and services; often co-located with housing and other activities.
- Industrial land – for manufacturing and warehousing activities; often located close to freight routes and usually separated from housing.

Greater Christchurch is well placed to meet the projected demands for commercial and industrial land over the next 10 years, and for industrial land over the next 30 years and beyond. However, the current supply of commercial land in the city region is not likely to be enough to meet the demand over the next 30 years.

More than enough industrial land is supplied in Christchurch, Selwyn and Waimakariri to meet demand over the next 30 years, with a particularly significant surplus in Christchurch. Assuming that demand for industrial land will decline in the long term due to global economic trends, the total supply of industrial land in Greater Christchurch may never be fully utilised.

Enough commercial land is also supplied in Christchurch, Selwyn and Waimakariri to meet demand over the next 10 years, but there is a shortfall of 110ha in Christchurch and 20ha in Selwyn when looking over the next 30 years. Shortfalls in commercial land are expected to be met through intensification in significant urban centres, major towns, and locally important urban centres and towns, as well as through rezoning of industrial land close to Christchurch's Central City to commercial and mixed-use. A focus for providing for commercial land will be those centres identified in *Map 14*, including the Priority Areas.

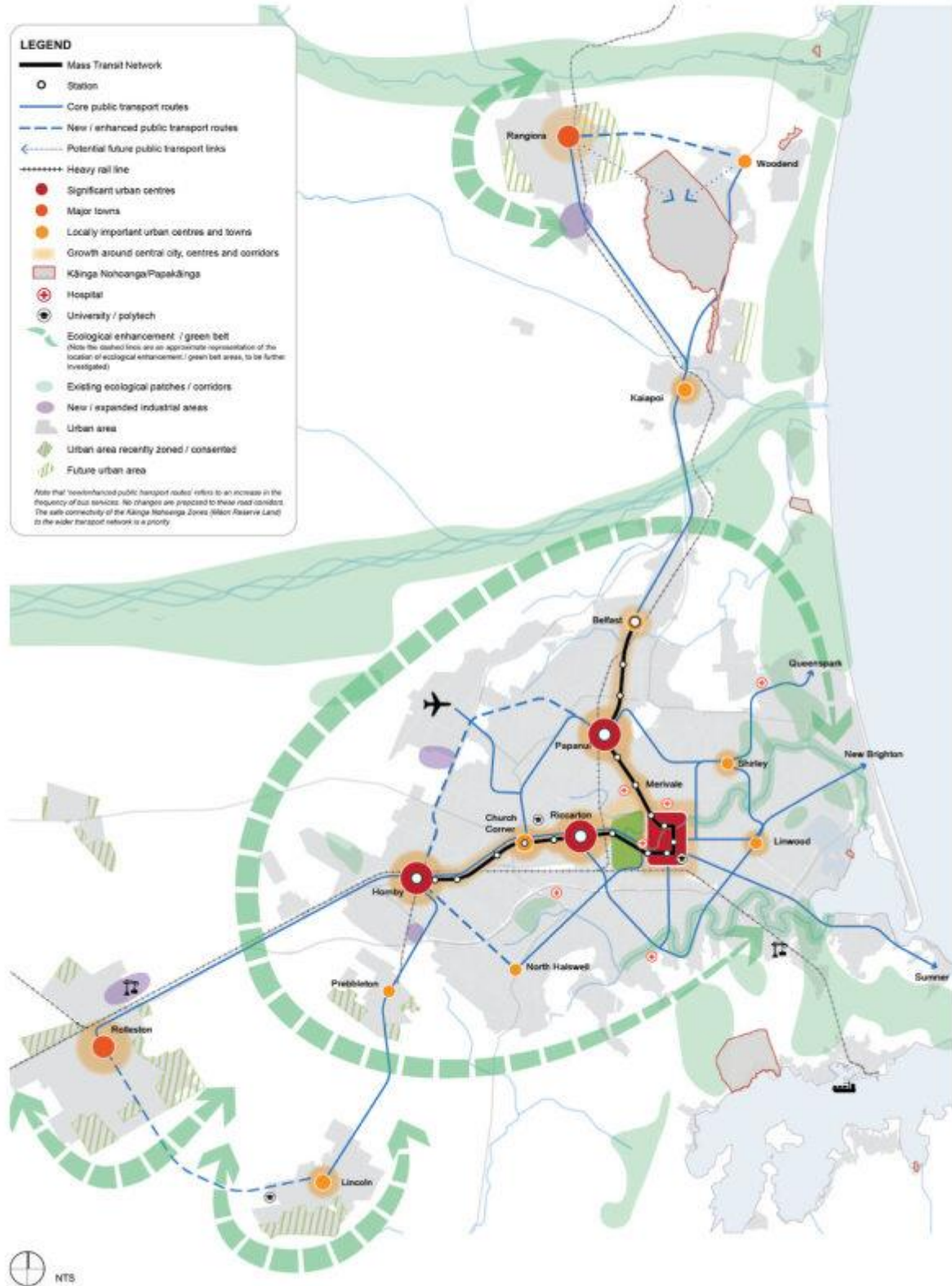
Table 3: Sufficiency of industrial land to meet projected demand (2022 – 2052)

	Feasible capacity		Demand with margin		Surplus / Shortfall	
	Medium term (0 – 10 years)	Long term (0 – 30 years)	Medium term (0 – 10 years)	Long term (0 – 30 years)	Medium term (0 – 10 years)	Long term (0 – 30 years)
Waimakariri	32ha	102ha	31ha	79ha	1ha	23ha
Christchurch	663ha	663ha	36ha	119ha	627ha	544ha
Selwyn	377ha	425ha	131ha	347ha	246ha	78ha
Total	1,073ha	1,190ha	198ha	545ha	874ha	645ha

Table 4: Sufficiency of commercial land to meet projected demand (2022 – 2052)

	Feasible capacity		Demand with margin		Surplus / Shortfall	
	Medium term (0 – 10 years)	Long term (0 – 30 years)	Medium term (0 – 10 years)	Long term (0 – 30 years)	Medium term (0 – 10 years)	Long term (0 – 30 years)
Waimakariri	36ha	63ha	12ha	32ha	24ha	31ha
Christchurch	102ha	102ha	85ha	212ha	17ha	-110ha
Selwyn	19ha	30ha	18ha	50ha	1ha	-20ha
Total	157ha	195ha	115ha	294ha	42ha	-99ha

Map 14: Broad locations of housing and business development capacity (700,000 people)



Amend Map 14 above as follows:

- a. Add notation - Ecological enhancement / green belt - The dashed lines are an approximate representation of the location of ecological enhancement / green belt areas, to be further investigated.
- b. Amend to align with new / expanded business (industrial and commercial) areas that were rezoned by the partially operative Selwyn District Plan.
- c. Amend to include any existing LLRZ in Greater Christchurch as part of the existing urban area.
- d. Amend to correctly show the Ōpāwaho Heathcote River.
- e. Amend legend item 'Growth around central city, centres and corridors' to correspond to the symbology on the maps.
- f. Amend to reflect resultant changes and the status of private plan changes, district plan reviews, IPIs and referred projects under the COVID-19 Recovery (Fast-track Consenting) Act 2020.
- g. Identify Prebbleton as a 'Locally important urban centres and town'.
- h. Include symbols for Lyttelton Port and the inland ports'
- j. Show the complete connections for the 'Core Public Transport routes' heading to Queenspark, New Brighton and Sumner.

5.2 A well connected centres network that strengthens Greater Christchurch's economic competitiveness and performance, leverages economic assets, and provides people with easy access to employment and services

Centres are places where people congregate for business, education and leisure; where business happens; and where people are able to meet their everyday needs close to where they live.

A strong centres network will:

- Efficiently utilise existing infrastructure, including public transport and freight networks; and support efficient investments in future infrastructure
- Realise gains in economic productivity that can be achieved when related businesses and activities (such as tertiary institutions) are concentrated and co-located, including improved productivity by supporting knowledge transfer, attracting talent, and providing economies of scale of similar businesses that can attract other businesses and customers
- Co-locate economic activity where people live so that people can access employment and services easily by walking and cycling.

The focus on supporting future population and business growth in key urban and town centres, coupled with the planned enhancements to the public transport network, will support a strong network of centres in Greater Christchurch.

*5.3 Provision of strategic infrastructure that is resilient, efficient, **integrated** and meets the needs of a modern society and economy.*

Strategic infrastructure networks include those required to:

- Manage wastewater and stormwater, and provide safe drinking water
- Provide for energy needs – household, business and transport
- Provide communication and digital connectivity

- Transport people and goods (covered under *Opportunity 6: Prioritise sustainable **and accessible** transport choices to move people and goods in a way that significantly reduces greenhouse gas emissions and enables access to social, cultural and economic opportunities*).

For infrastructure networks provided by local councils, including water infrastructure, each council is required to prepare an infrastructure strategy, and supporting network and catchment plans, to ensure there is sufficient capacity to meet current and future demands, and that environmental standards are met. Infrastructure strategies are updated based on changes to growth projections, such to inform decisions on infrastructure investment.

Telecommunications and energy infrastructure are provided by state-owned enterprises and the private sector. Telecommunications infrastructure is fundamental to the digital transformation of public and private infrastructure, while electricity infrastructure is fundamental to the transition to a low emissions future.

A key issue is the need to ensure that infrastructure is provided that meets the needs of mana whenua for the development of kāinga nohoanga on Māori Land, with a particular focus on MR873 at Tuahiwi. While policy and plan changes have occurred to enable kāinga nohoanga in Greater Christchurch, this has not been supported with investment in infrastructure. Within Greater Christchurch's urban areas, it is assumed that the development of kāinga nohoanga will be able to be accommodated within the capacity of existing infrastructure or through planned infrastructure upgrades.

The close alignment of infrastructure provision with the growing and changing needs of people, communities and businesses requires strong partnerships and joint planning, including:

- Partnering with mana whenua to identify and respond to the specific infrastructure needs for Māori Reserve Land to ensure that there is sufficient capacity, and feasible access to, local networks; while also supporting mana whenua with upgraded infrastructure where needed within urban areas to enable kāinga nohoanga
- Establishing strong partnerships with providers of energy and digital technologies, and ensuring that planning for telecommunications and energy infrastructure is well integrated with new development.

Current and planned state of strategic infrastructure networks

- Wastewater networks have capacity to meet growth over the next decade, although some specific locations or sites may require infrastructure upgrades or alternative solutions to enable development. This includes MR873 at Tuahiwi, where a bespoke approach to the funding and delivery of services may be needed.
- The suburbs of Shirley and Aranui in Christchurch are serviced by a vacuum sewer system, which are at or near operational capacity and currently with no feasible solution to increase capacity.
- Most sites have the ability to mitigate stormwater effects on-site, or have planned local catchment solutions and programmes to address water quality and quantity issues. For some sites, on-site mitigation infrastructure may be required that will add to development costs. However, this does not preclude development from occurring.
- In Christchurch, major water supply upgrades have been completed or are planned for completion over the next 10 years. A focus for water supply assets will be over \$200 million invested in the improvement and maintenance of the reticulation network. This will reduce leakages and improve the long term sustainability of the water supply, ensuring these assets remain fit-for-purpose to accommodate future growth and to meet required water quality and health standards.

- Growth in the use of electricity for transport will necessitate greater provision of electric charging networks in Greater Christchurch. This is expected to be provided by the private sector. Over time, there may be a requirement for greater local generation of green energy. **The provision of reliable renewable energy will be important for achieving a low carbon future for Greater Christchurch.**
- **The National Grid will continue to play an important role in electrification of the economy and will need to be protected. Long-term planning for the maintenance, operation, upgrading and development of the National Grid needs to be facilitated and supported. While existing National Grid assets are identified on the Spatial Plan maps, new development will necessitate new assets, particularly to connect to new generation.**
- Telecommunications technology is continually changing to meet the expectations of customers for new, faster and uninterrupted digital experiences. The challenge is finding locations to increase the density of telecommunications networks to meet the demand generated by growth. Redevelopment and new growth areas need to integrate network infrastructure with land use and the needs of communities.

5.4 Urban growth occurs in locations that do not compromise the ability of primary production activities to expand or change, including adapting to a lower emissions economy.

Greater Christchurch is a business and research hub for primary production across Canterbury and the South Island. Primary production is one of the key drivers of our economy and employment. A strong agricultural economy supports growth and development in the rest of the economy due to its linkages with research, manufacturing, and transport. Quarries also play an important role in urban growth and development. Consideration needs to be given to their location, operation, and function, to ensure a reliable and affordable future supply of aggregates and that adverse impacts on communities and the environment, including potential effects on groundwater and drinking water sources, can be appropriately managed. This includes the rehabilitation of quarry sites once extraction ceases.

Primary production activities are located within Greater Christchurch, and urban growth can impact these land uses and rural communities. Some of these effects can be positive, bringing new people and amenities to rural areas. However, there are also adverse effects of urban growth which need to be managed.

There is need for primary production activities to be able to expand or change in response to new markets and new issues, including transforming to a lower emissions economy. A growing primary production industry creates opportunities for other industries to prosper.

5.5 Urban Growth occurs in locations and patterns that protects strategic regionally and nationally important tertiary institutes.

Greater Christchurch has significant tertiary education and research capability. This includes four tertiary institutes and several research institutes, including six of the seven Crown Research Institutes in Aotearoa New Zealand.

There are more than 25,000 tertiary students across the four tertiary campuses in Greater Christchurch. The majority of these institutions are located outside of the significant urban centres of Greater Christchurch, and may be impacted by urban growth. Improved public transport links to campuses will enhance integration with Greater Christchurch.

Tertiary and research institutes need to be provided for and protected as these institutions are providing the skilled workers of the future as well as key drivers creating and adopting innovations, and providing more sustainable ways for our communities and businesses to operate.

Part 3 – Connecting people and places

Opportunity 6: Prioritise sustainable **and accessible** transport choices to move people and goods in a way that significantly reduces greenhouse gas emissions and enables access to social, cultural and economic opportunities

A transformational shift in how people travel is needed to achieve major reductions in transport emissions. This is one of the biggest challenges facing Greater Christchurch and will require substantial improvements in its transport system. The Spatial Plan takes an integrated approach to strategic land use and transport planning to provide a pathway to achieving a more sustainable, accessible and equitable transport future.

Context

- There is a strong dependence on cars to travel in Greater Christchurch.
- Population growth will continue to increase the vehicle kilometres travelled by cars and other light vehicles based on current travel patterns. Substantial reductions in vehicle kilometres travelled by the light fleet is needed to achieve emissions reductions targets.
- Growth in vehicle kilometres travelled will also increase congestion, which has implications for health, safety, amenity, productivity and the environment.
- Shifting transport choices away from cars requires significant improvements to public and active transport, and measures to encourage people to change their travel behaviour; along with an urban form that supports people to take shorter trips to meet their daily needs and activities.
- The prosperous development of kāinga nohoanga on Māori Reserve Land requires significant improvements to levels of accessibility to surrounding transport networks and services.
- The volume of freight is forecast to continue to increase in the future, while the emissions from heavy transport needs to decrease to support reductions in transport emissions.
- The strategic road and rail networks are essential for moving goods into, out of and within the city region, and supporting it to be the primary logistics hub for Te Waipounamu / South Island.

Direction

- 6.1 Enable safe, attractive and connected opportunities for walking, cycling and other micro mobility
- 6.2 Significantly improve public transport connections between key centres
- 6.3 Improve accessibility to Māori Reserve Land to support kāinga nohoanga
- 6.4 Develop innovative measures to encourage people to change their travel behaviours
- 6.5 Protect the effective operation of the freight network

Map 15: Transport network



Amend Map 15 above as follows:

- Include key freight routes as shown below



- Add Port notations to map legend
- Include three cycleways in Selwyn District
- Lincoln to Rolleston cycle way
- Rolleston to West Melton cycleway
- Springston and Lincoln cycle path
- Include the airport symbol in the legend
- show the complete connections for the 'Core Public Transport routes' heading to Queenspark, New Brighton and Sumner.
- Include the alternative freight routes shown below:



Direction

6.1 Enable safe, attractive and connected opportunities for walking, cycling and other micromobility

A key component of the focus on targeted intensification is the creation of an urban form that supports and encourages as many trips as possible being made by active travel – walking, cycling and other modes of micro mobility (such as scooters). Achieving this requires not only an increase in density of development in centres, but also a commitment to urban design that prioritises active travel within and between communities – making it safe and convenient.

Some ways that active travel could be supported include ensuring good walking and cycling access within local communities and to local centres; extending the network of dedicated cycleways and cycle lanes to create a comprehensive network that connects key centres and destinations; creating low speed zones and limited access streets in residential areas; and rebalancing the use of roads and streets to reflect the functions of place and movement.

6.2 Significantly improve public transport connections between key centres

Reducing the reliance on cars means encouraging people to use public transport more often. This requires significant improvements to public transport services to ensure they offer an attractive alternative to cars for a broader range of trips, particularly those less suited to active travel.

An important first step to improving Greater Christchurch’s public transport network is to accelerate the implementation of planned improvements to the existing bus network, as set out in the Greater Christchurch Public Transport Futures programme. This involves frequency improvements coupled with infrastructure investments that will support faster and more reliable journey times on core bus routes. These core routes provide connections to Christchurch’s Central City and other key centres where more intensive development is planned. The programme includes reallocation of road space on core routes to enable priority way for buses.

A key feature of the future public transport network in Greater Christchurch is the proposed mass rapid transit service that would offer a high frequency and capacity ‘turn-up-and-go’ service on the strategic growth corridors along Papanui Road and Riccarton Road, linking with the Central City. The delivery of this service would involve a phased implementation, starting initially between Papanui and Church Corner, then extending to Belfast and Hornby, and with improved connections to key towns in Selwyn and Waimakariri.

Higher density residential and commercial development within the walkable catchments of mass rapid transit stations would support a higher share of trips being made using public transport, which would in turn support frequency and capacity improvements.

6.3 Improve accessibility to Māori Reserve Land to support kāinga nohoanga

Planning and investing in improved accessibility to Māori Reserve Land by public and active modes of transport is necessary to support the prosperous development of kāinga nohoanga in Greater Christchurch. Delivering better connections to Māori Land, as well as supporting kāinga nohoanga within urban areas with improved accessibility, will involve a partnership approach between mana whenua, and councils and Waka Kotahi.

The development of Greater Christchurch’s transport network in the future must also not preclude or prevent the development of Māori Reserve Land as settlements to their fullest extent possible. This includes ensuring that Māori Land is not used or taken for public infrastructure required to service development on adjoining or proximate land.

6.4 Develop innovative measures to encourage people to change their travel behaviours

A significant change in travel behaviour needs to occur to meet the objective for a more sustainable, accessible and equitable transport system in Greater Christchurch. Achieving mode shift from cars to public and active modes of transport will be particularly important for reducing vehicle kilometres travelled by cars and other light vehicles, and contributing to emissions reduction targets.

The focus on targeted intensification in urban and town centres, and along public transport corridors, together with the proposed improvements to public and active modes of transport, will provide a strong platform for the shift away from cars. However, reducing the reliance on cars will also need to be supported by planning and investing in systemic changes in travel behaviours, recognising the massive shift that needs to occur largely within the next decade.

Some ways that effective travel demand management and behaviour change initiatives could be delivered include building awareness and understanding about the range of low emissions travel options through information and education initiatives; incentivising the use of public and active transport through appropriate pricing and promotions; managing car parking policies; and supporting central government investigations into future road pricing options.

6.5 Protect the effective operation of the freight network

As the main freight and logistics hub for Te Waipounamu / South Island, it is essential that the development of Greater Christchurch continues to support a well-functioning freight network. This means ensuring that the strategic road and rail connections to key freight and logistics hubs, including the Port of Lyttelton, Christchurch Airport and the inland ports at Rolleston and Woolston, are not compromised by development and uncontrolled growth in travel demands on the network.

This is likely to require steps in the future to prioritise the use of road space on strategic freight routes, primarily the state highways, and to direct housing development away from those routes to ensure that the amenity of residential areas are not compromised. In some cases, it may be necessary to consider relocating strategic freight routes to reduce the potential conflict with residential and commercial intensification.

Shifting freight from road to rail and coastal shipping will help to reduce emissions from freight, as well as reduce the pressure on the road network in Greater Christchurch.

Implementation

Joint work programme

The partnership has developed a joint work programme comprising key actions and initiatives, and a selection of Priority Areas, that will help to implement the direction of the Spatial Plan. The work programme will also inform the investment decisions made by partners.

An indication of what each component of the joint work programme will entail is provided below, along with how they align with the six opportunities of the Spatial Plan.

The partnership will agree the scope and resources needed to deliver the joint work programme.

The Whakawhanake Kāinga Komiti will receive biannual updates on the progress of the joint work programme.

The Spatial Plan is an enduring document, with the scope for new Priority Areas, key actions and initiatives, and tools being added to the joint work programme if they should arise in the future. The plan will be reviewed and updated (as needed) every five years. **The Future Development Strategy component of the plan will be reviewed and updated (as needed) every three years.**

Action / Initiative	Purpose	Opportunity 1: Protect historic heritage and sites and areas of significance to Māori	Opportunity 2: Reduce risks from natural hazards and climate change	Opportunity 3: Protect, restore and enhance the natural environment	Opportunity 4: Support thriving communities with diverse and affordable housing	Opportunity 5: Provide space for businesses and the economy to prosper	Opportunity 6: Prioritise more sustainable modes of travel	Supporting Agencies	Timing
Greater Christchurch Transport Plan (including Mass Rapid Transit)	To plan and coordinate the development of an integrated transport system that will encourage mode shift, reduce vehicle kilometres travelled and transport emissions, and help shape the urban form.							Urban Growth Partners	Ongoing
Kāinga Nohoanga Strategy	To provide direction to partners on how to support and enable kāinga nohoanga on Māori Land and within urban areas.							Urban Growth Partners	Ongoing
Priority Areas	To enable aligned and coordinated action across multiple agencies to inform and prioritise investment to achieve change and growth that will not be delivered by the market on its own.							Urban Growth Partners, Developer Sector	To be determined
Joint Housing Action Plan	To create a housing action plan that ensures the entire housing continuum is working effectively to provide quality , affordable housing choice and diversity.							Urban Growth Partners, Community Housing Providers, Developer Sector	Short term

Blue-Green Network Strategy (including Green Belt Concept)	To develop an integrated blue-green network strategy reflecting the blue-green network principles and environmental directions. This strategy will also include investigating options to establish a Green Belt Action Plan.							Urban Growth Partners	Medium term
Economic Development Plan	To create a comprehensive economic development plan that integrates and coordinates existing strategies and plans to realise the Spatial Plan's aspirations for economic prosperity.							Urban Growth Partners, Economic Development Agencies, Canterbury Employers Chamber of Commerce, Tertiary Education Providers	Medium term
Statutory tools	To assess, propose and implement the suite of statutory tools that will give effect to the Spatial Plan, improve the feasibility of intensification , and enable delivery of the joint work programme.							Urban Growth Partners	Short term
Non-statutory tools	To assess, propose and implement the suite of non-statutory tools that will give effect to the Spatial Plan, improve the feasibility of intensification , and enable delivery of the joint work programme.							Urban Growth Partners	Medium term

Key

	Major contribution to the opportunity
	Moderate contribution to the opportunity

	Minor contribution to the opportunity
--	---------------------------------------

DRAFT

Tools

Tools that enable the Spatial Plan to deliver on its directions can either be statutory or non-statutory. Previous growth plans and strategies have predominantly focused on statutory tools, which have been implemented by councils. The partnership believes a more flexible approach comprising a mix of statutory and non-statutory tools will be more effective in delivering on the outcomes sought by the plan.

The joint work programme will consider a broad range of both statutory and non-statutory tools to be used for selection by the partnership. The responsibility for implementing these tools will reside with the partner that has the authority or is best suited to deliver the tool.

Partnerships

The partnership is committed to showing visible leadership and using a collaborative approach to address the issues identified for Greater Christchurch. Although implementation of the Spatial Plan will principally be the domain of councils, mana whenua and government agencies, the private sector, third sector and community also have a key role to play in ensuring the shared vision for the future is realised.

Coordinated action with infrastructure providers and the development sector will be of particular importance to enabling the type and scale of development needed to achieve the desired pattern of growth. It will be crucial that investments are aligned with the planned direction set out in the Spatial Plan, which will require strong working relationships between councils, infrastructure providers, developers and the property sector.

Monitoring

The partnership will establish an implementation plan and mechanisms to monitor progress in achieving the opportunities, directions and key moves set out in the Spatial Plan, and for reporting on progress of the joint work programme. The progress made on the work programme will be reported bi-annually to the Whakawhanake Kāinga Komiti. **The partnership must also undertake monitoring as required by the National Policy Statement on Urban Development which will inform future development capacity assessments.**

The Spatial Plan will be reviewed every five years, incorporating the latest release of census information from Stats NZ. This will ensure that future iterations of the plan can respond to changing demographic, social, economic and cultural factors. **The Future Development Strategy component of the plan will be reviewed every three years following the preparation of the latest Housing and Business Development Capacity Assessment.**

The joint work programme should be reviewed and updated every three years to coincide with council's long term planning processes to ensure the partnership prioritises and adequately resources the delivery of the Spatial Plan (and its future iterations).